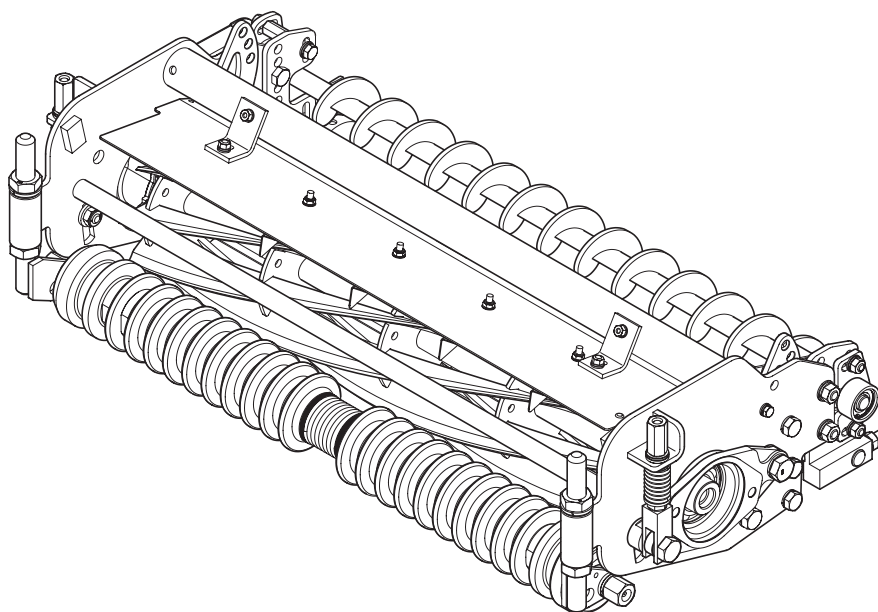


LS62·LS66

Standard Mower Unit

Parts catalog



BARONESS
Quality on Demand

Serial No. LS62 : 10221- • LS66 : 10757-

Ver.1.4

Greeting

Thank you for purchasing Baroness machine.

This machine has been shipped from the factory after comprehensive test runs and inspections. However, the optimum performance of the machine depends on how you use and maintain it, including routine inspections, adjustments, and fuel supplies before and after the operation.

We hope you will use the machine safely, and take advantage of its best performance.

Note

(For inquiry about this machine)

Since the type of machine may be changed sequentially, inform us of the type and the serial number.

The information described in this manual is subject to change without prior notice.

When replacing parts, be sure to use Baroness parts or parts designated by Kyo-eisha.

Note that the Baroness product warranty may not apply to defects caused by the use of parts from other companies.

(For ordering parts)

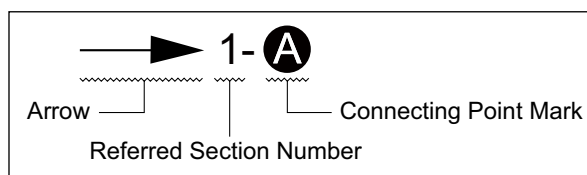
For prevention of delivery of wrong parts, be sure to inform us of the code number and the part name.

| Example: | Code No. | Part Name | Qty |
|----------|-------------|--------------------|-----|
| | K0200100002 | WASHER, SPRING M10 | 8 |

<Indication of the connecting point shown on the other page>

(Example and description)

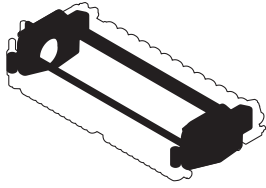
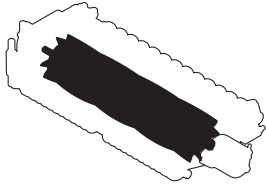
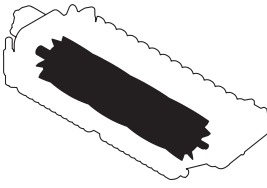
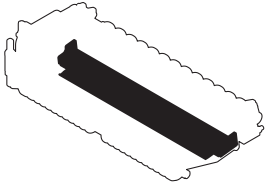
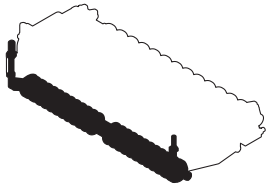
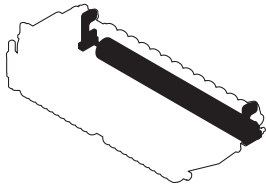
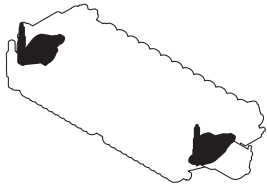
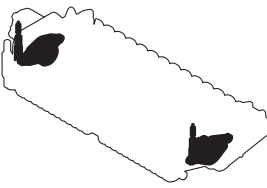
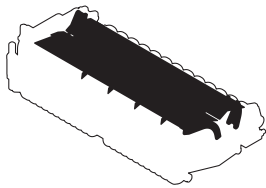
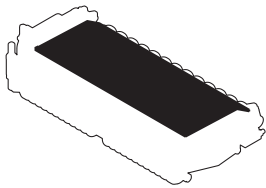
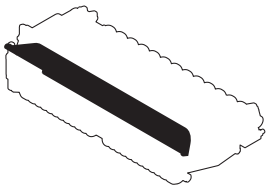
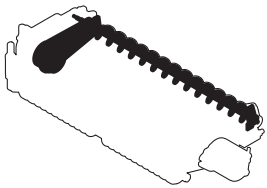
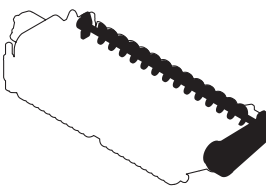
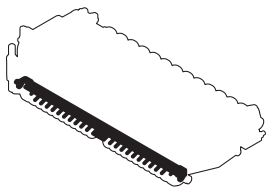
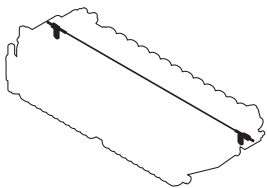
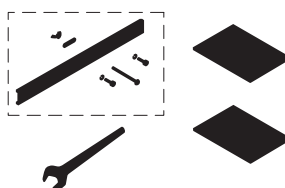
The following indication shows the connecting point of the part shown on the other page.

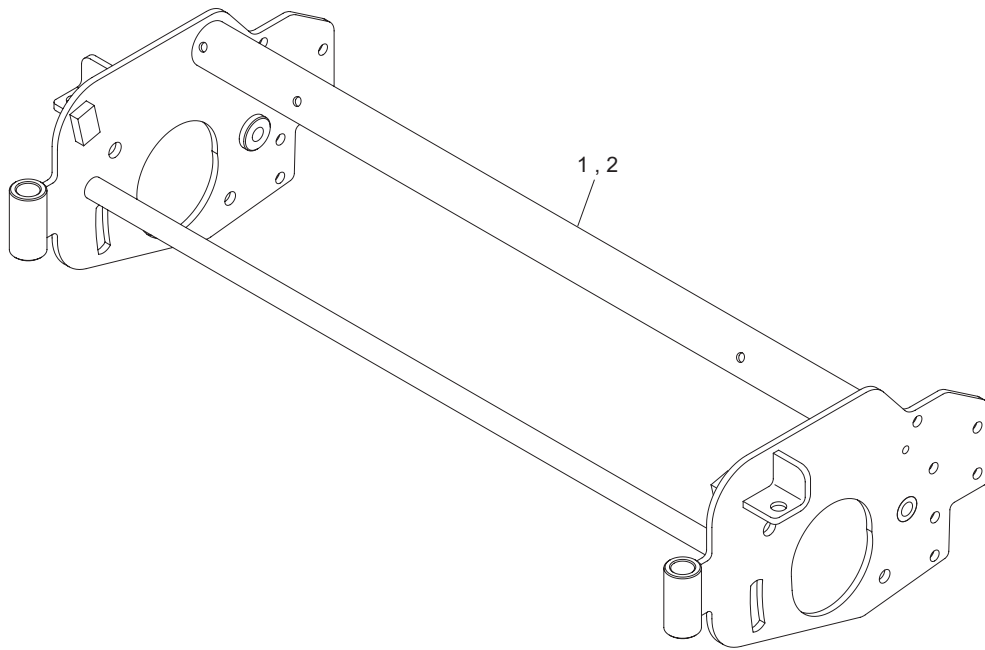


→ 1- **A** : Refer to the point **A** in the illustration of the section No.1

→ 2- **B** : Refer to the point **B** in the illustration of the section No.2

Contents

| | | | |
|--|--|---|--|
| <p>1.Frame section.....2</p>  | <p>2.Reel cutter section (motor on left side).....3</p>  | <p>3.Reel cutter section (motor on right side)4</p>  | <p>4.Bed knife section5</p>  |
| <p>5.Front roller section6</p>  | <p>6.Rear roller section7</p>  | <p>7.Housing section (motor on left side).....8</p>  | <p>8.Housing section (motor on right side)10</p>  |
| <p>A9.Reel cover section (variable type).....12</p>  | <p>B9.Reel cover section (fixed type, rear discharge) ..13</p>  | <p>C9.Reel cover section (fixed type, front discharge) .14</p>  | <p>10.CR brush section (motor on left side).....15</p>  |
| <p>11.CR brush section (motor on right side)17</p>  | <p>12.Front scraper section.....19</p>  | <p>13.Rear scraper section (wire type).....20</p>  | <p>14.Accessories21</p>  |

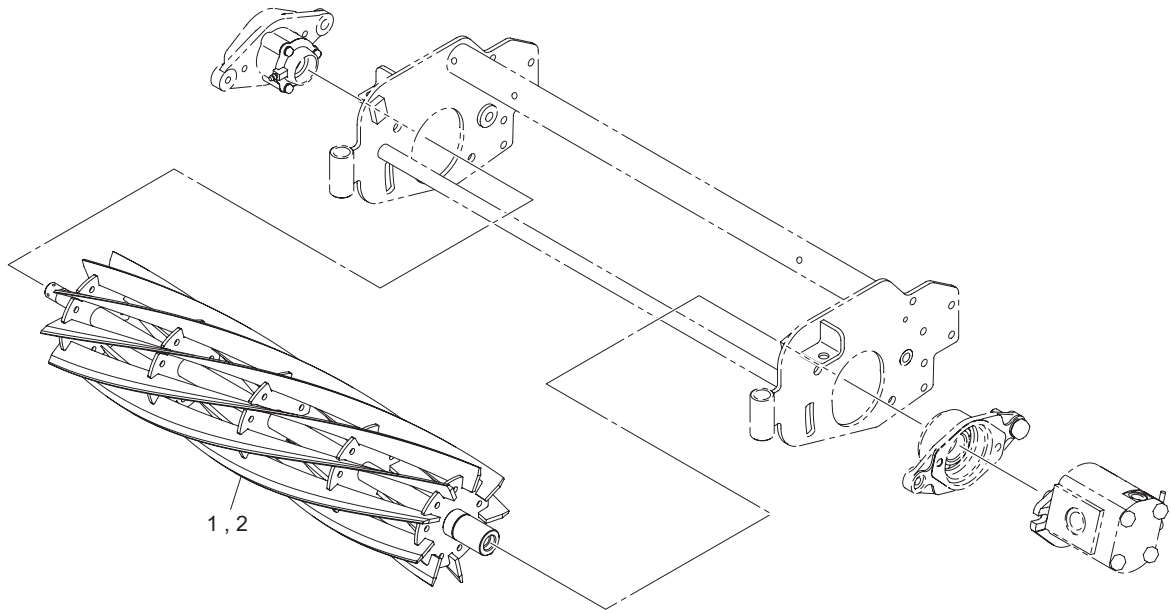


LS66_001_z00

| Cat No. | Code No. | Part name | Qty | | Remark | SN of application |
|---------|---------------|-----------------|------|------|--------|-------------------|
| | | | LS62 | LS66 | | |
| 1-1 | LS62---0101ZR | FRAME, MOWER 22 | 1 | 0 | | |
| 1-2 | LS66---0101ZR | FRAME, MOWER 26 | 0 | 1 | | |
| | | | | | | |
| | | | | | | |
| | | | | | | |
| | | | | | | |
| | | | | | | |
| | | | | | | |
| | | | | | | |

2.Reel cutter section (motor on left side)

LS62 • LS66

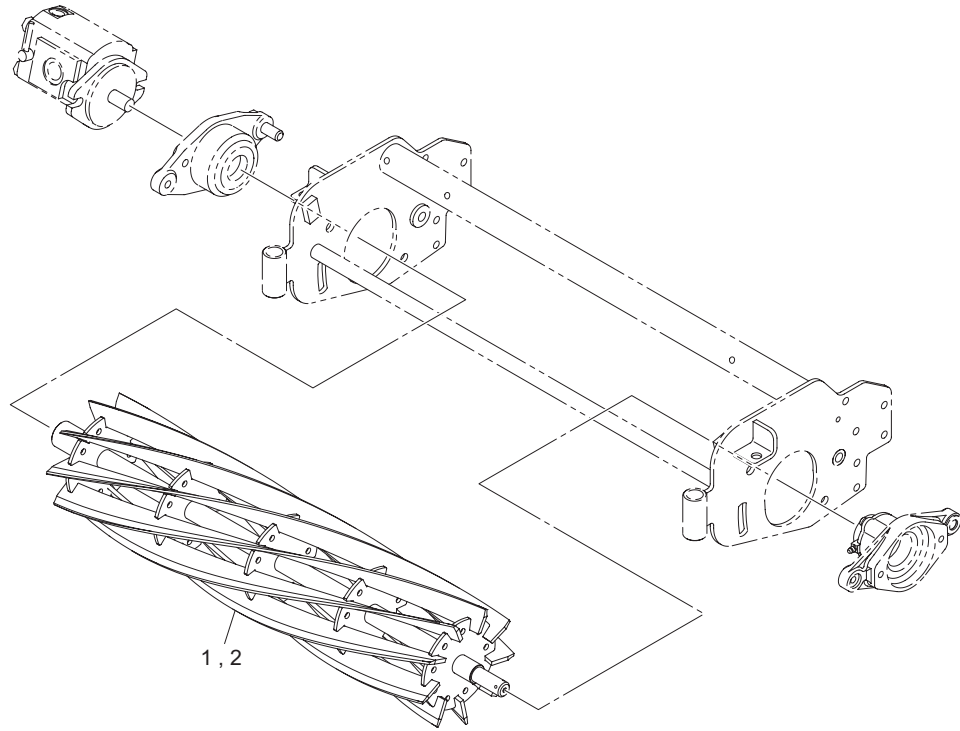


LS66_002_z00

| Cat No. | Code No. | Part name | Qty | | Remark | SN of application |
|---------|-------------|---------------------|------|------|---------|-------------------|
| | | | LS62 | LS66 | | |
| 2-1 | K285261L90R | REEL CUTTER, 557-9L | 1 | 0 | 9-blade | |
| 2-2 | K285260L90R | REEL CUTTER, 660-9L | 0 | 1 | 9-blade | |
| 2a-2 | K285260L70R | REEL CUTTER, 660-7L | 0 | 1 | 7-blade | |
| 2b-2 | K285260L50R | REEL CUTTER, 660-5L | 0 | 1 | 5-blade | |
| | | | | | | |
| | | | | | | |
| | | | | | | |
| | | | | | | |
| | | | | | | |
| | | | | | | |

3.Reel cutter section (motor on right side)

LS62 • LS66

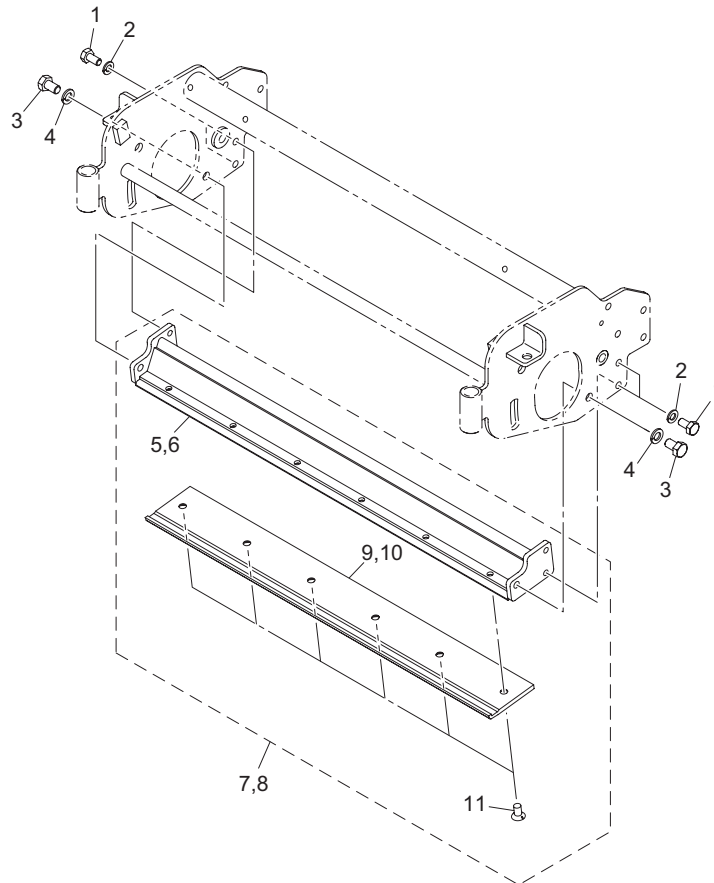


LS66_003_z00

| Cat No. | Code No. | Part name | Qty | | Remark | SN of application |
|---------|-------------|---------------------|------|------|---------|-------------------|
| | | | LS62 | LS66 | | |
| 3-1 | K285261R90R | REEL CUTTER, 557-9R | 1 | 0 | 9-blade | |
| 3-2 | K285260R90R | REEL CUTTER, 660-9R | 0 | 1 | 9-blade | |
| 3a-2 | K285260R70R | REEL CUTTER, 660-7R | 0 | 1 | 7-blade | |
| 3b-2 | K285260R50R | REEL CUTTER, 660-5R | 0 | 1 | 5-blade | |
| | | | | | | |
| | | | | | | |
| | | | | | | |
| | | | | | | |
| | | | | | | |
| | | | | | | |
| | | | | | | |

4. Bed knife section

LS62 • LS66

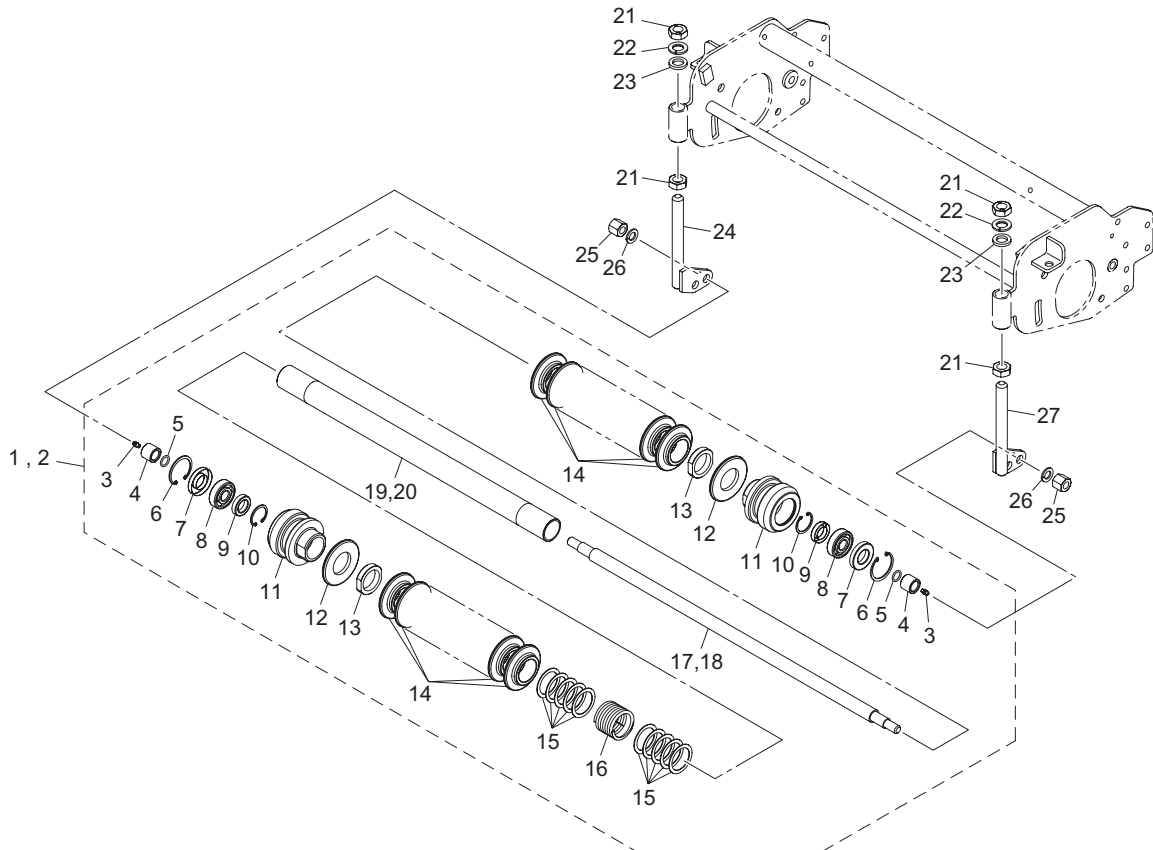


LS66_004_z00

| Cat No. | Code No. | Part name | Qty | | Remark | SN of application |
|---------|---------------|----------------------------|------|------|--------|-------------------|
| | | | LS62 | LS66 | | |
| 4-1 | K0000100202 | BOLT, M10-20 | 4 | 4 | | |
| 4-2 | K0200100002 | WASHER, SPRING M10 | 4 | 4 | | |
| 4-3 | K0000120202 | BOLT, M12-20 | 2 | 2 | | |
| 4-4 | K0200120002 | WASHER, SPRING M12 | 2 | 2 | | |
| 4-5 | LS62---0301ZR | BASE, BEDKNIFE 629.5 | 1 | 0 | | |
| 4-6 | LS66---0301ZR | BASE, BEDKNIFE 732 | 1 | 1 | | |
| 4-7 | LS62---0310Z0 | BEDKNIFE COMP, 7 | 1 | 0 | | |
| 4a-7 | LS62---1310Z0 | BEDKNIFE & BASE COMP, 5 | 1 | 0 | | |
| 4-8 | LS66---0310Z0 | BEDKNIFE COMP, 7 | 0 | 1 | | |
| 4a-8 | LS66---1310Z0 | BEDKNIFE & BASE COMP, 5 | 0 | 1 | | |
| 4-9 | K2510000290 | BEDKNIFE, TIPPED 7.0-22 | 1 | 0 | | |
| 4a-9 | K2510000280 | BEDKNIFE, TIPPED 5.0-22 | 1 | 0 | | |
| 4-10 | K2510000030 | BEDKNIFE, TIPPED 7.0-26 | 0 | 1 | | |
| 4a-10 | K2510000250 | BEDKNIFE, TIPPED 5.0-26 | 0 | 1 | | |
| 4-11 | K0071001182 | SCREW, HT FLAT HEAD M10-16 | 6 | 6 | | |
| | | | | | | |
| | | | | | | |
| | | | | | | |

5.Front roller section

LS62 • LS66

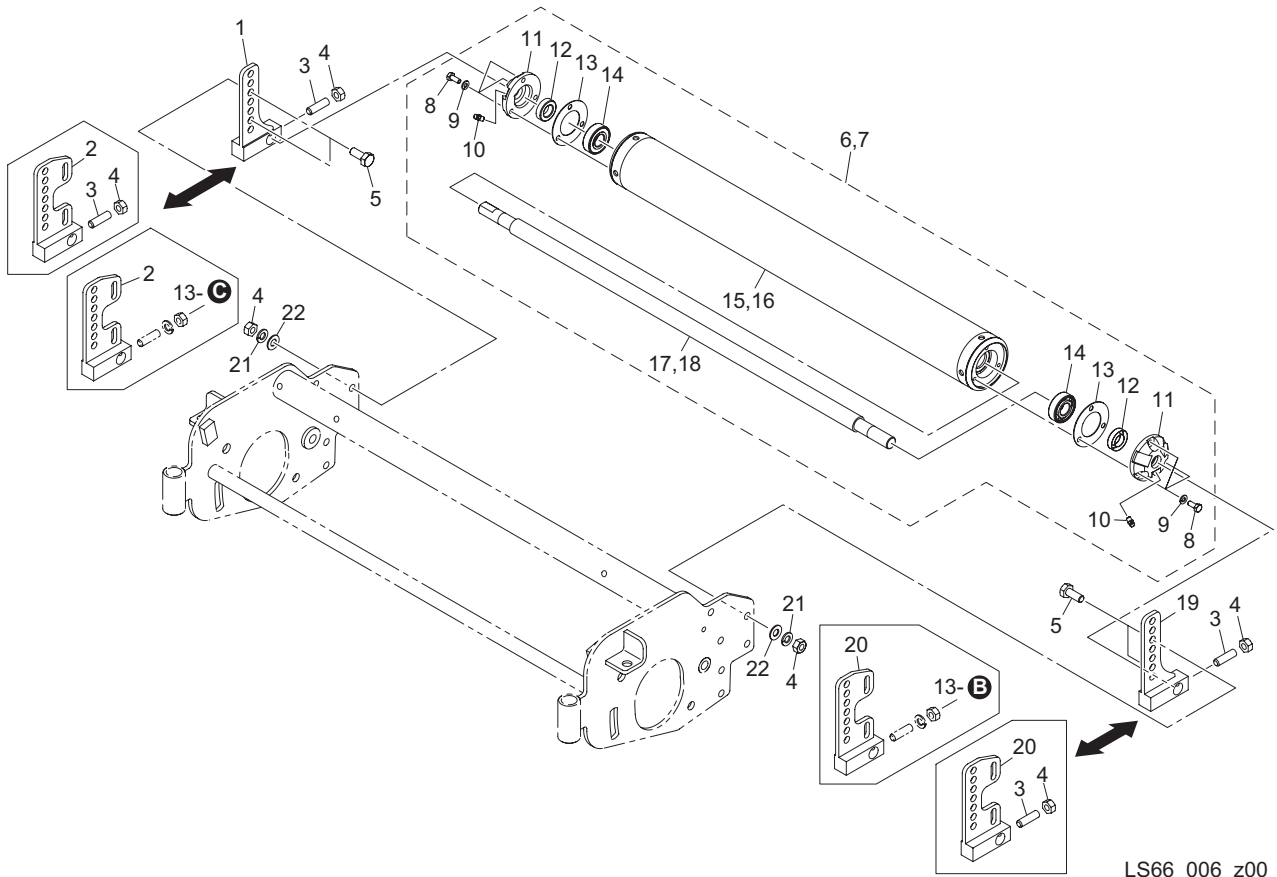


LS66_005_z00

| Cat No. | Code No. | Part name | Qty | | Remark | SN of application |
|---------|---------------|--------------------------------|------|------|--------|-------------------|
| | | | LS62 | LS66 | | |
| 5-1 | LS62---0611Z0 | ROLLER ASSY, GROOVED 22 | 1 | 0 | | |
| 5-2 | LS66---0611Z0 | ROLLER ASSY, GROOVED 26 | 0 | 1 | | |
| 5-3 | K144000010 | GREASE NIPPLE, STRAIGHT TYPE A | 2 | 2 | | |
| 5-4 | LS66---0603Z0 | COLLAR, SUS 17-25-21 | 2 | 2 | | |
| 5-5 | K0885015000 | O-RING, S15 | 2 | 2 | | |
| 5-6 | K0402047001 | RING, RETAINING R M47 | 2 | 2 | | |
| 5-7 | K0822547080 | OIL SEAL, MHTA25478 | 2 | 2 | | |
| 5-8 | K0600063030 | BEARING, BALL 6303 | 2 | 2 | | |
| 5-9 | K0822235080 | OIL SEAL, MHTA22358 | 2 | 2 | | |
| 5-10 | K0402035001 | RING, RETAINING R M35 | 2 | 2 | | |
| 5-11 | LH6690-0601ZD | HOUSING, ROLLER | 2 | 2 | | |
| 5-12 | K510100061D | PLATE, ROUND 80 | 2 | 2 | | |
| 5-13 | K016000062D | NUT, M40 | 2 | 2 | | |
| 5-14 | K5920000120 | ROLLER, PLASTIC 80 | 14 | 18 | | |
| 5-15 | K5011040522 | WASHER, SPCC 1-40-52 | 10 | 10 | | |
| 5-16 | K100000073D | SPRING, COMPRESSION M5-51-75 | 1 | 1 | | |
| 5-17 | LM2700-2107Z0 | SHAFT, ROLLER 646.5 | 1 | 0 | | |
| 5-18 | LM2700-0152Z0 | SHAFT, ROLLER 22-749 | 0 | 1 | | |
| 5-19 | LM2700-2109Z2 | PIPE, ROLLER 34.2-40504.7 | 1 | 0 | | |
| 5-20 | LM2700-0151Z2 | PIPE, ROLLER 34.2-40607.2 | 0 | 1 | | |
| 5-21 | K0108180002 | NUT, P1.5 M18-3 | 4 | 4 | | |
| 5-22 | K0200180002 | WASHER, SPRING M18 | 2 | 2 | | |
| 5-23 | K5012018282 | WASHER, SPCC 2-18-28 | 2 | 2 | | |
| 5-24 | LS66---0602Z2 | SCREW. HOC ADJ (RH) | 1 | 1 | | |
| 5-25 | K0160000652 | NUT, SPECIAL M14-30 | 2 | 2 | | |
| 5-26 | K0200140002 | WASHER, SPRING M14 | 2 | 2 | | |
| 5-27 | LS66---0601Z2 | SCREW. HOC ADJ (LH) | 1 | 1 | | |

6.Rear roller section

LS62 • LS66

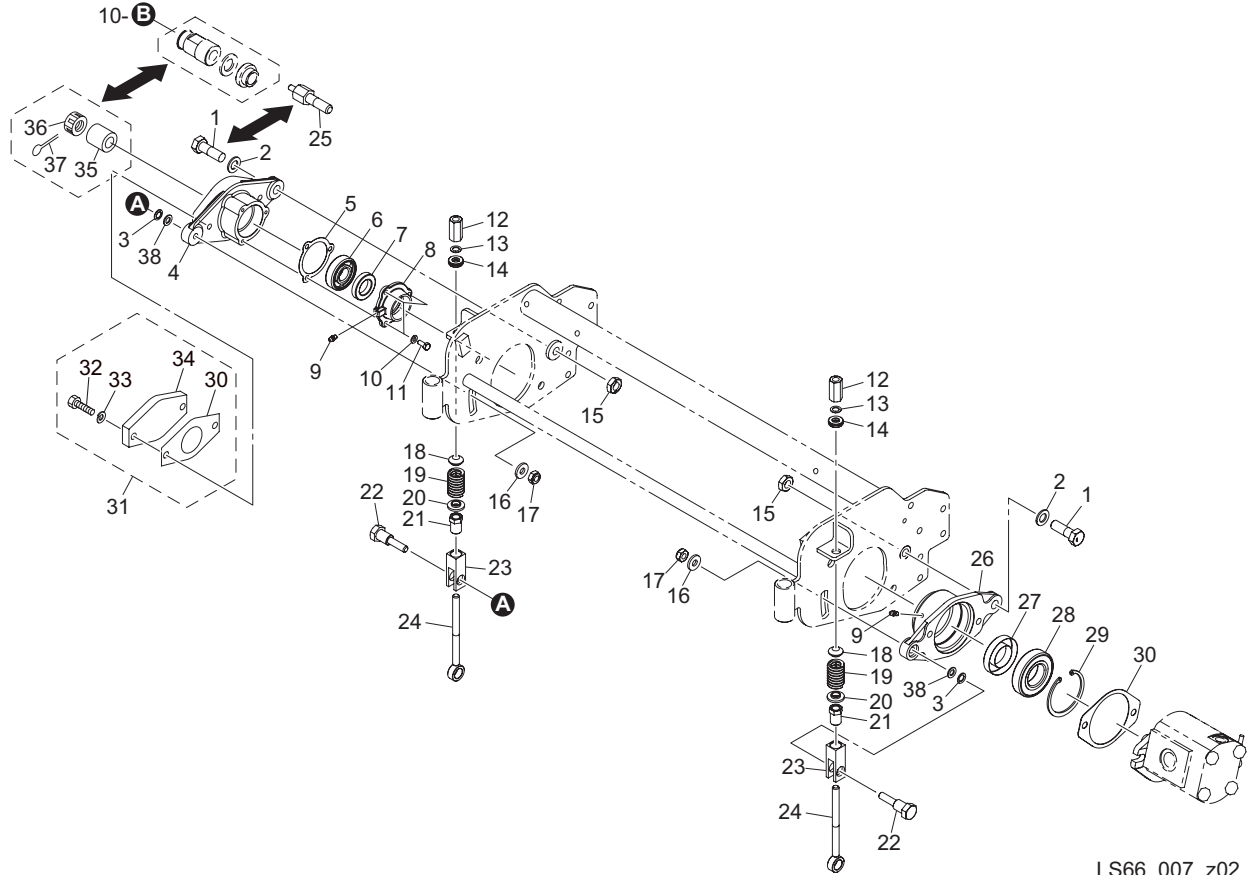


LS66_006_z00

| Cat No. | Code No. | Part name | Qty | | Remark | SN of application |
|---------|---------------|--------------------------------|------|------|--------------|-------------------|
| | | | LS62 | LS66 | | |
| 6-1 | LS66---0702Z2 | BRACKET, ROLLER (RH) | 1 | 1 | STD | |
| 6-2 | LS66---1702Z2 | BRACKET, ROLLER (RH) | 1 | 1 | for CR brush | |
| 6-3 | K0023100251 | SETSCREW, M10-25 | 2 | 2 | | |
| 6-4 | K0100100002 | NUT, M10 | 6 | 6 | | |
| 6-5 | K0000100252 | BOLT, M10-25 | 4 | 4 | | |
| 6-6 | K8021000560 | ROLLER ASSY, 661.5 | 1 | 0 | | |
| 6-7 | K8021000520 | ROLLER ASSY, 764 | 0 | 1 | | |
| 6-8 | K0000060152 | BOLT, M6-15 | 6 | 6 | | |
| 6-9 | K0200060002 | WASHER, SPRING M6 | 6 | 6 | | |
| 6-10 | K1440000010 | GREASE NIPPLE, STRAIGHT TYPE A | 2 | 2 | | |
| 6-11 | K6810000070 | HOUSING, SEAL | 2 | 2 | | |
| 6-12 | K0821730080 | OIL SEAL, MHSA17308 | 2 | 2 | | |
| 6-13 | K4015136650 | PACKING, FIBER 1-36-65 | 2 | 2 | | |
| 6-14 | K0602062030 | BEARING, BALL SHIELD Z 6203 | 2 | 2 | | |
| 6-15 | K740000026D | ROLLER, 76.2-571.5 | 1 | 0 | | |
| 6-16 | K740000024D | ROLLER, 76.2-674 | 0 | 1 | | |
| 6-17 | K6155000300 | SHAFT, ROLLER 661.5 | 1 | 0 | | |
| 6-18 | K6155000280 | SHAFT, ROLLER 764 | 0 | 1 | | |
| 6-19 | LS66---0701Z2 | BRACKET, ROLLER (LH) | 1 | 1 | STD | |
| 6-20 | LS66---1701Z2 | BRACKET, ROLLER (LH) | 1 | 1 | for CR brush | |
| 6-21 | K0200100002 | WASHER, SPRING M10 | 4 | 4 | | |
| 6-22 | K5000100002 | WASHER, M10 | 4 | 4 | | |

7.Housing section (motor on left side)

LS62 • LS66

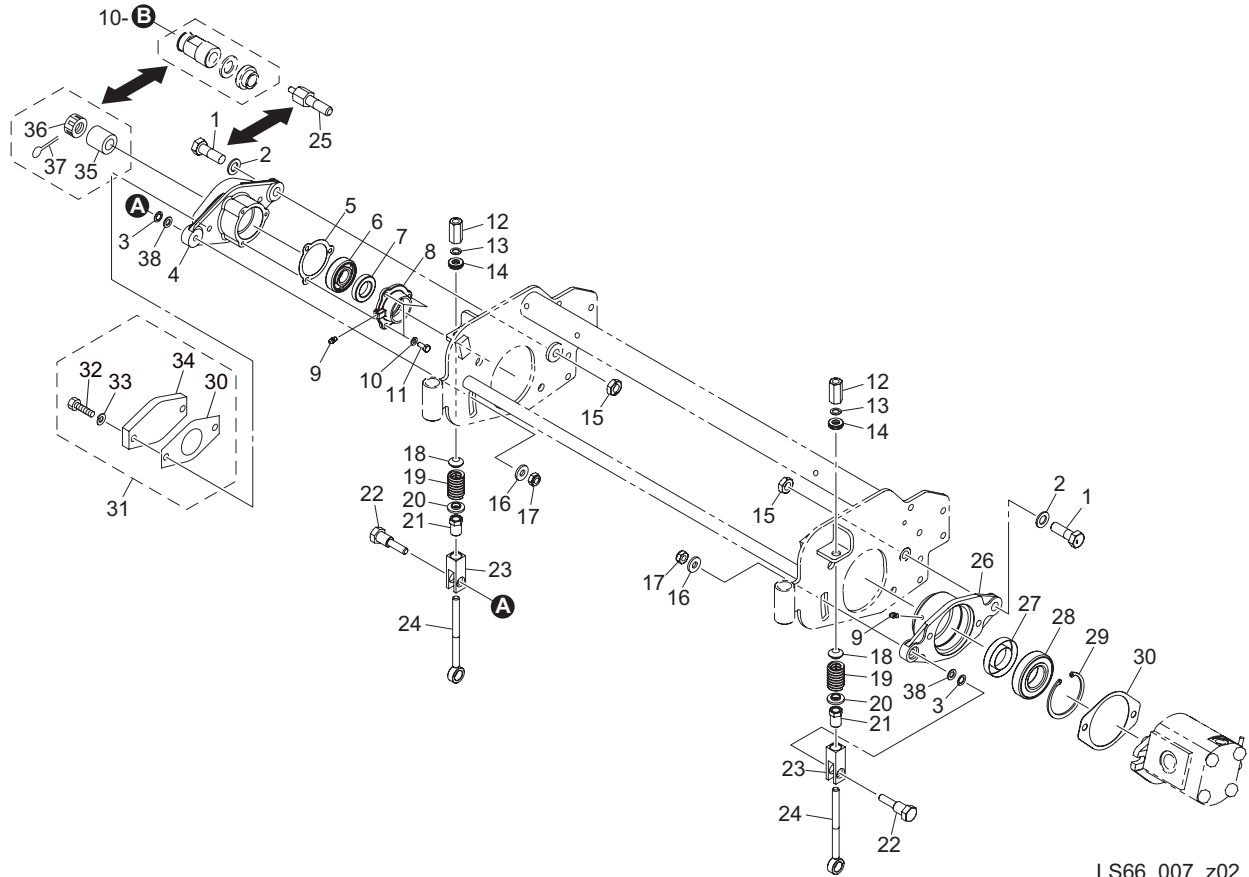


LS66_007_z02

| Cat No. | Code No. | Part name | Qty | | Remark | SN of application |
|---------|---------------|----------------------------------|------|------|--------------|-------------------|
| | | | LS62 | LS66 | | |
| 7-1 | K0071001132 | BOLT, AXIS | 2 | 2 | STD | |
| 7a-1 | K0071001132 | BOLT, AXIS | 1 | 1 | for CR brush | |
| 7-2 | K5012314252 | WASHER, SPCC 2.3-14-25 | 2 | 2 | | |
| 7-3 | K0214100002 | WASHER, DISK SPRING 2L M10 | 2 | 2 | | |
| 7-4 | K6903000222 | HOUSING, REEL CUTTER CR | 1 | 1 | | |
| 7-5 | K4011000150 | PACKING, OIL-SHEET | 1 | 1 | | |
| 7-6 | K0602063040 | BEARING, BALL SHIELD Z 6304 | 1 | 1 | | |
| 7-7 | K0822542080 | OIL SEAL, MHSA25428 | 1 | 1 | | |
| 7-8 | K6903000042 | CAP, HOUSING | 1 | 1 | | |
| 7-9 | K1440000010 | GREASE NIPPLE, STRAIGHT TYPE A | 2 | 2 | | |
| 7-10 | K0200060002 | WASHER, SPRING M6 | 3 | 3 | | |
| 7-11 | K0000060152 | BOLT, M6-15 | 3 | 3 | | |
| 7-12 | LM56G--0506Z2 | NUT, HIGH M10-17-35 P1.0 | 2 | 2 | | |
| 7-13 | K5051010160 | WASHER, C5191P 1-10-16 | 2 | 2 | | |
| 7-14 | K5090000820 | WASHER, SPHERICAL M10 | 2 | 2 | | |
| 7-15 | K0105140002 | NUT, P1.5 M14-3 | 2 | 2 | | |
| 7-16 | K5073210242 | WASHER, SPHC 3.2-10-24 | 2 | 2 | | |
| 7-17 | K0145100002 | NUT, W/F-RING, P1.25 M10 | 2 | 2 | | |
| 7-18 | K6206000172 | RECEIVER, SPRING | 2 | 2 | | |
| 7-19 | K1000000458 | SPRING, COMPRESSION M5-25-60 | 2 | 2 | | |
| 7-20 | K6206000052 | RECEIVER, FOR SPRING | 2 | 2 | | |
| 7-21 | K6081000082 | PIPE, W/CUTTER ADJUSTING SCREW | 2 | 2 | | |
| 7-22 | K6082000122 | BOLT, STEPPED FOR FIXING HOUSING | 2 | 2 | | |
| 7-23 | K6090000552 | MOUNT, ADJUSTING SCREW | 2 | 2 | | |
| 7-24 | K7303000182 | BOLT, ADJUSTING CUTTER | 2 | 2 | | |
| 7-25 | LM2400-2409Z2 | BOLT, AXIS | 1 | 1 | for CR brush | |
| 7-26 | LS66L--0402Z2 | HOUSING, HYDRAULIC MOTOR A | 1 | 1 | | |
| 7-27 | K0823560120 | OIL SEAL, MHSA356012 | 1 | 1 | | |
| 7-28 | K0602062070 | BEARING, BALL SHIELD Z 6207 | 1 | 1 | | |
| 7-29 | K0402072001 | RING, RETAINING R M72 | 1 | 1 | | |

7.Housing section (motor on left side)

LS62 • LS66

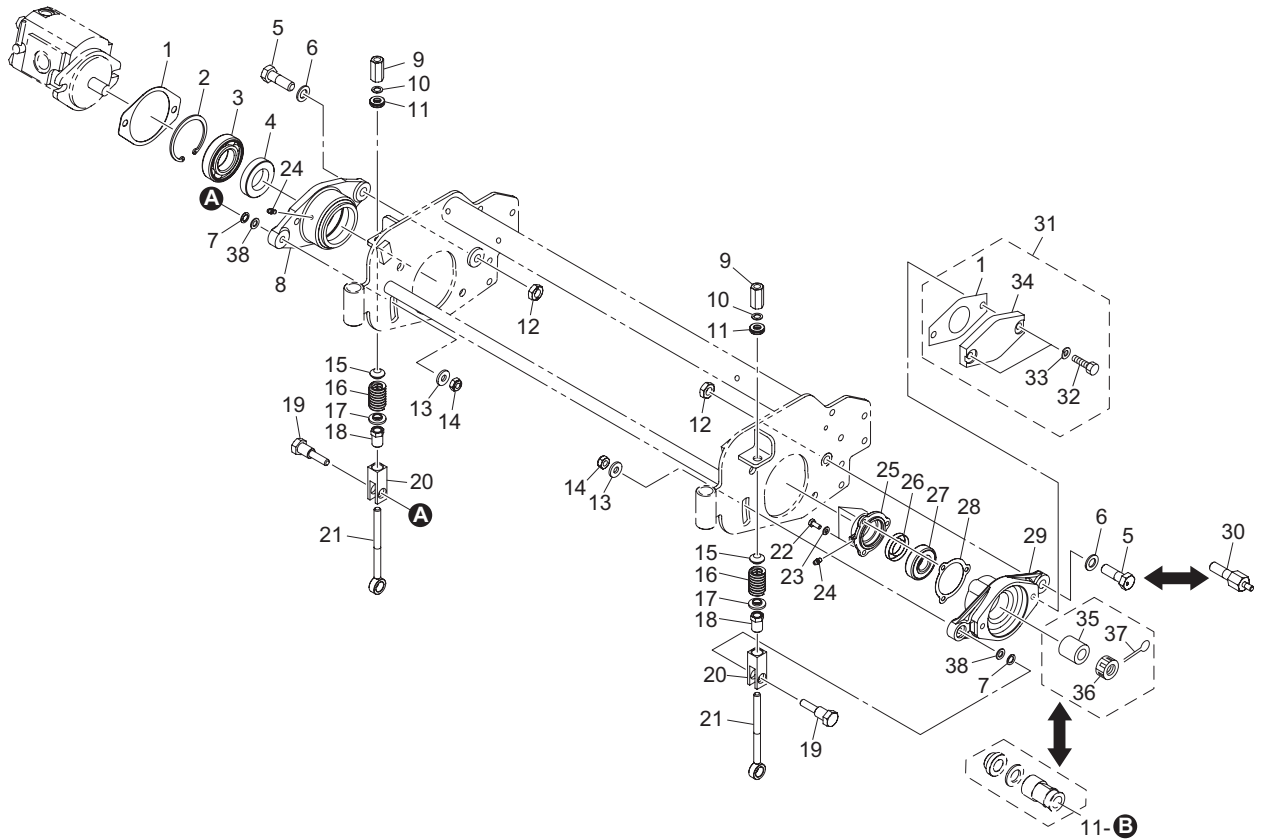


LS66_007_z02

| Cat No. | Code No. | Part name | Qty | | Remark | SN of application |
|---------|--------------|--------------------------|------|------|--------|-------------------|
| | | | LS62 | LS66 | | |
| 7-30 | K4011000290 | PACKING, OIL-SHEET | 2 | 2 | | |
| 7-31 | LS66--0910Z0 | WEIGHT ASSY | 1 | 1 | | |
| 7-32 | K0000100452 | BOLT, M10-45 | 2 | 2 | | |
| 7-33 | K0200100002 | WASHER, SPRING M10 | 2 | 2 | | |
| 7-34 | K690300017D | COVER, REEL HOUSING | 1 | 1 | | |
| 7-35 | K6212001742 | COLLAR, STKM M20.2-28-18 | 1 | 1 | STD | |
| 7-36 | K0170000012 | NUT, SPECIAL M20 | 1 | 1 | STD | |
| 7-37 | K0300032252 | PIN, COTTER M3.2-25 | 1 | 1 | STD | |
| 7-38 | K5012310172 | WASHER, SPCC 2.3-10-17 | 2 | 2 | | |
| | | | | | | |
| | | | | | | |
| | | | | | | |
| | | | | | | |

8.Housing section (motor on right side)

LS62 • LS66

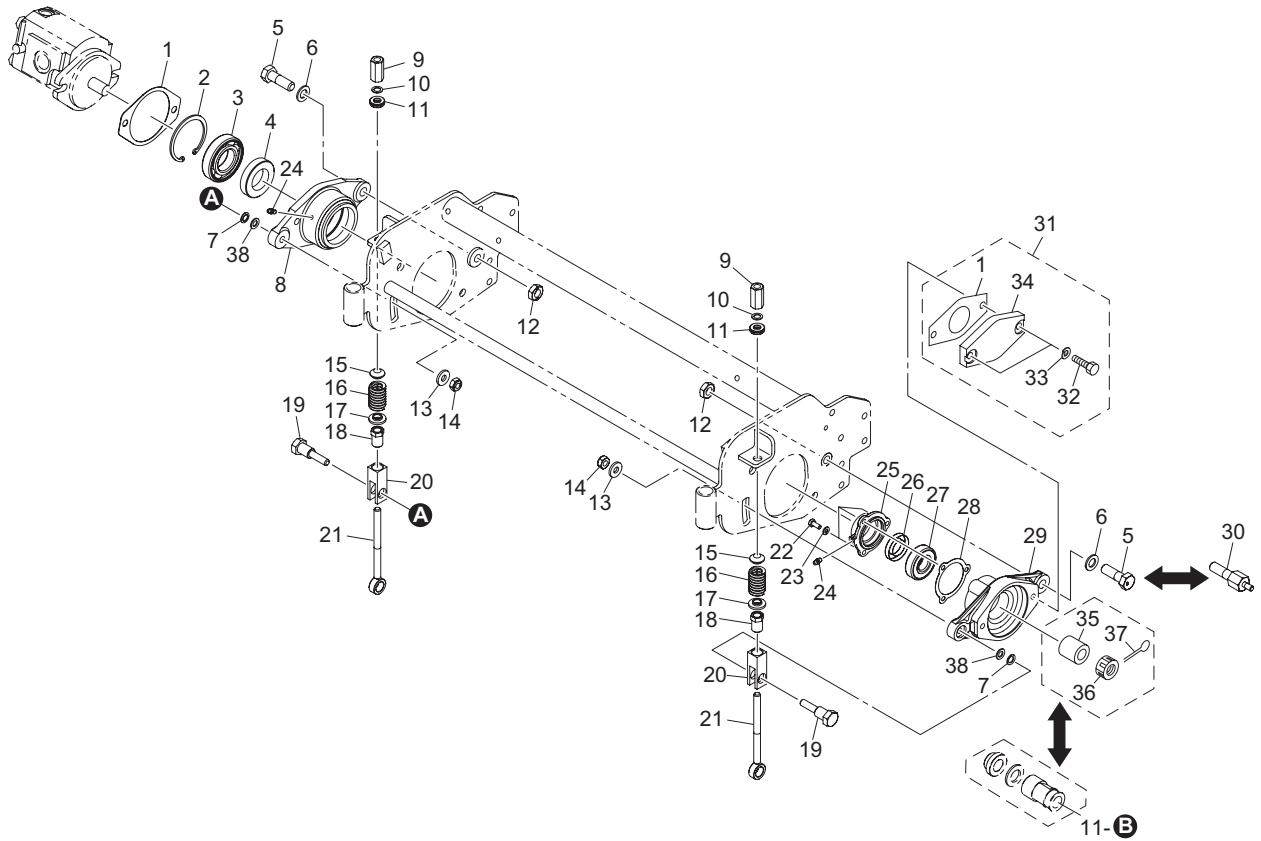


LS66_008_z02

| Cat No. | Code No. | Part name | Qty | | Remark | SN of application |
|---------|---------------|----------------------------------|------|------|--------------|-------------------|
| | | | LS62 | LS66 | | |
| 8-1 | K4011000290 | PACKING, OIL-SHEET | 2 | 2 | | |
| 8-2 | K0402072001 | RING, RETAINING R M72 | 1 | 1 | | |
| 8-3 | K0602062070 | BEARING, BALL SHIELD Z 6207 | 1 | 1 | | |
| 8-4 | K0823560120 | OIL SEAL, MHSA356012 | 1 | 1 | | |
| 8-5 | K0071001132 | BOLT, AXIS | 2 | 2 | STD | |
| 8a-5 | K0071001132 | BOLT, AXIS | 1 | 1 | for CR brush | |
| 8-6 | K5012314252 | WASHER, SPCC 2.3-14-25 | 2 | 2 | | |
| 8-7 | K0214100002 | WASHER, DISK SPRING 2L M10 | 2 | 2 | | |
| 8-8 | LS66R--0402Z2 | HOUSING, HYDRAULIC MOTOR B | 1 | 1 | | |
| 8-9 | LM56G--0506Z2 | NUT, HIGH M10-17-35 P1.0 | 2 | 2 | | |
| 8-10 | K5051010160 | WASHER, C5191P 1-10-16 | 2 | 2 | | |
| 8-11 | K5090000820 | WASHER, SPHERICAL M10 | 2 | 2 | | |
| 8-12 | K0105140002 | NUT, P1.5 M14-3 | 2 | 2 | | |
| 8-13 | K5073210242 | WASHER, SPHC 3.2-10-24 | 2 | 2 | | |
| 8-14 | K0145100002 | NUT, W/F-RING, P1.25 M10 | 2 | 2 | | |
| 8-15 | K6206000172 | RECEIVER, SPRING | 2 | 2 | | |
| 8-16 | K1000000458 | SPRING, COMPRESSION M5-25-60 | 2 | 2 | | |
| 8-17 | K6206000052 | RECEIVER, FOR SPRING | 2 | 2 | | |
| 8-18 | K6081000082 | PIPE, W/CUTTER ADJUSTING SCREW | 2 | 2 | | |
| 8-19 | K6082000122 | BOLT, STEPPED FOR FIXING HOUSING | 2 | 2 | | |
| 8-20 | K6090000552 | MOUNT, ADJUSTING SCREW | 2 | 2 | | |
| 8-21 | K7303000182 | BOLT, ADJUSTING CUTTER | 2 | 2 | | |
| 8-22 | K0000060152 | BOLT, M6-15 | 3 | 3 | | |
| 8-23 | K0200060002 | WASHER, SPRING M6 | 3 | 3 | | |
| 8-24 | K1440000010 | GREASE NIPPLE, STRAIGHT TYPE A | 2 | 2 | | |
| 8-25 | K6903000042 | CAP, HOUSING | 1 | 1 | | |
| 8-26 | K0822542080 | OIL SEAL, MHSA25428 | 1 | 1 | | |
| 8-27 | K0602063040 | BEARING, BALL SHIELD Z 6304 | 1 | 1 | | |
| 8-28 | K4011000150 | PACKING, OIL-SHEET | 1 | 1 | | |
| 8-29 | K6903000222 | HOUSING, REEL CUTTER CR | 1 | 1 | | |

8.Housing section (motor on right side)

LS62 • LS66

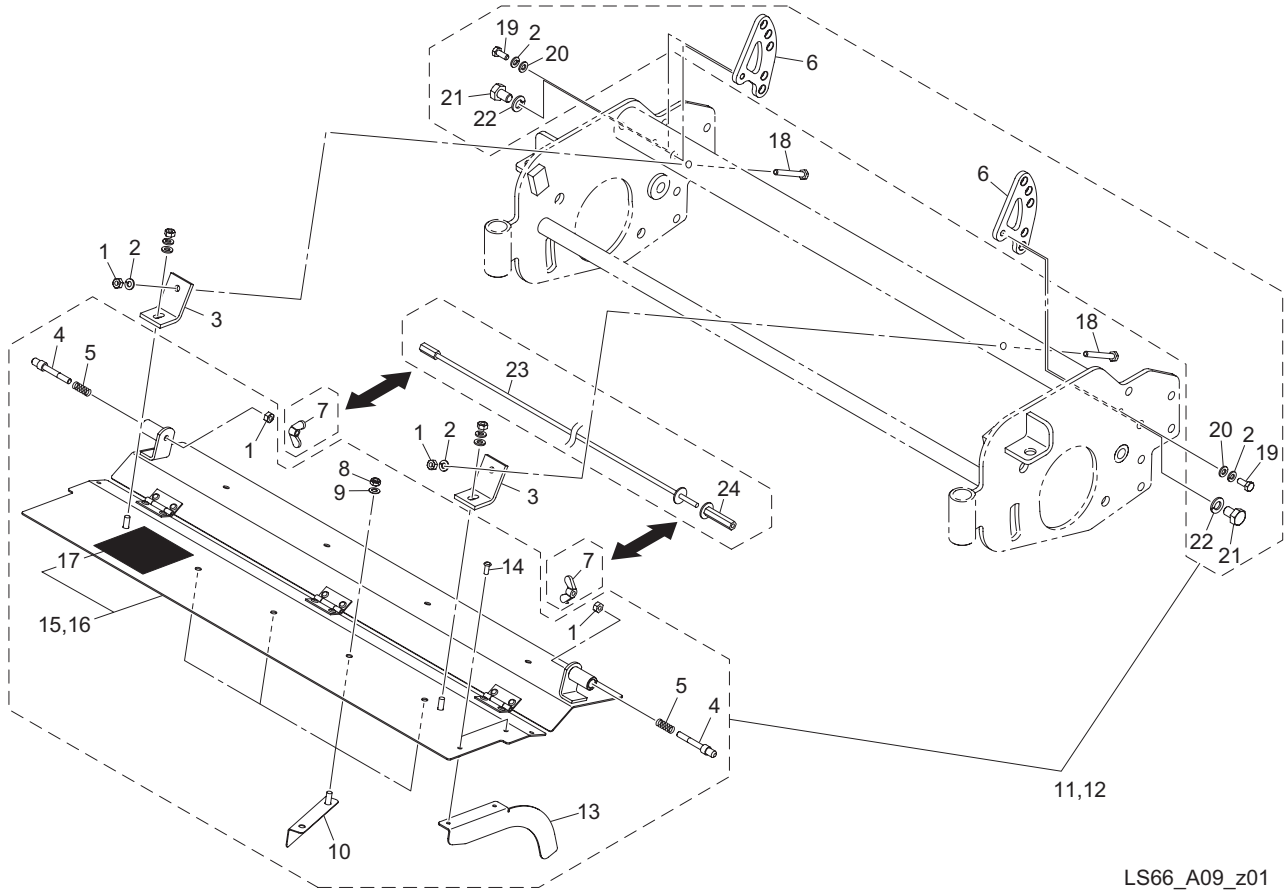


LS66_008_z02

| Cat No. | Code No. | Part name | Qty | | Remark | SN of application |
|---------|---------------|--------------------------|------|------|--------------|-------------------|
| | | | LS62 | LS66 | | |
| 8-30 | LM2400-2409Z2 | BOLT, AXIS | 1 | 1 | for CR brush | |
| 8-31 | LS66--0910Z0 | WEIGHT ASSY | 1 | 1 | | |
| 8-32 | K0000100452 | BOLT, M10-45 | 2 | 2 | | |
| 8-33 | K0200100002 | WASHER, SPRING M10 | 2 | 2 | | |
| 8-34 | K690300017D | COVER, REEL HOUSING | 1 | 1 | | |
| 8-35 | K6212001742 | COLLAR, STKM M20.2-28-18 | 1 | 1 | STD | |
| 8-36 | K0170000012 | NUT, SPECIAL M20 | 1 | 1 | STD | |
| 8-37 | K0300032252 | PIN, COTTER M3.2-25 | 1 | 1 | STD | |
| 8-38 | K5012310172 | WASHER, SPCC 2.3-10-17 | 2 | 2 | | |
| | | | | | | |
| | | | | | | |
| | | | | | | |
| | | | | | | |
| | | | | | | |

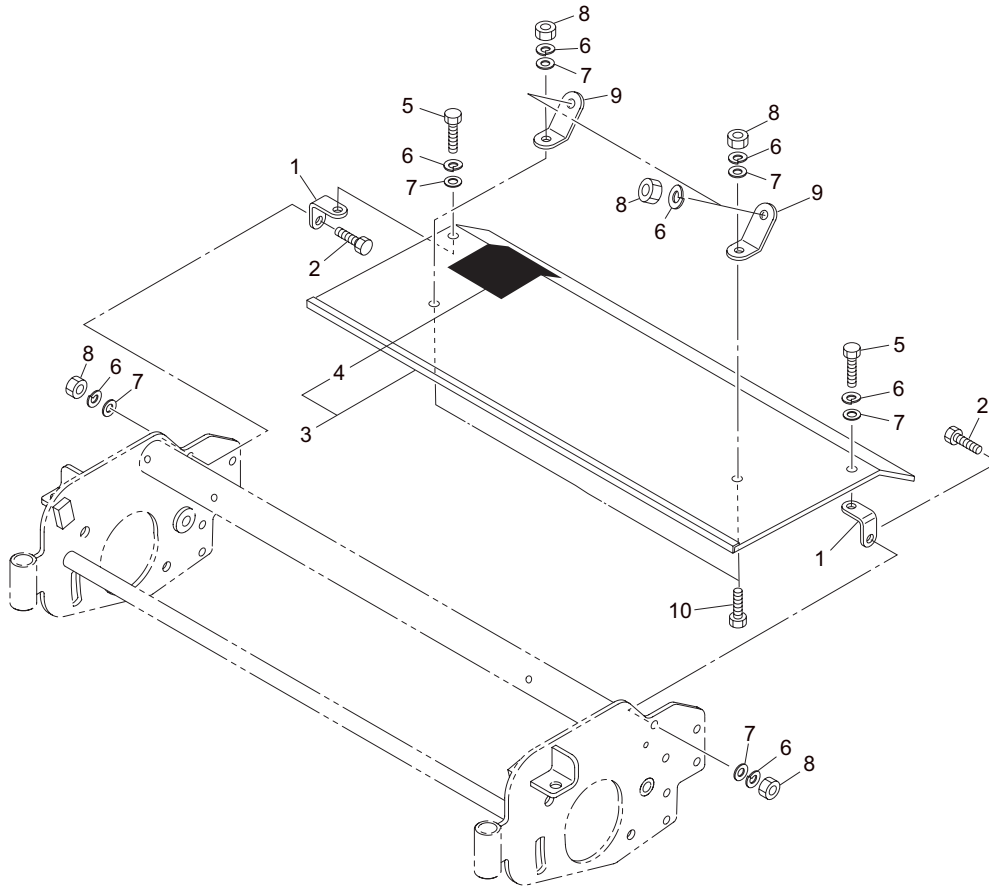
A9.Reel cover section (variable type)

LS62 • LS66



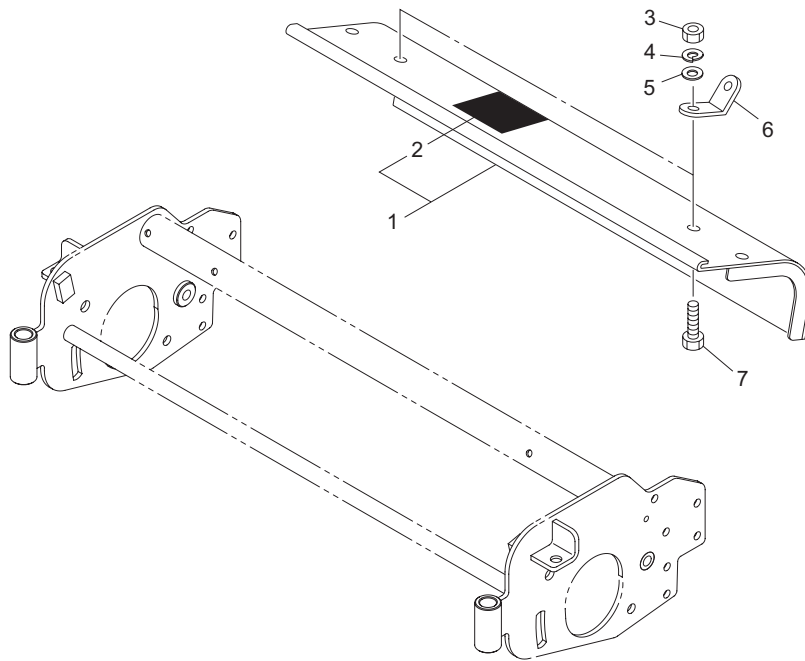
LS66_A09_z01

| Cat No. | Code No. | Part name | Qty | | Remark | SN of application |
|---------|---------------|-----------------------------------|------|------|------------|-------------------|
| | | | LS62 | LS66 | | |
| A9-1 | K0100060002 | NUT, M6 | 4 | 4 | | |
| A9-2 | K0200060002 | WASHER, SPRING M6 | 4 | 4 | | |
| A9-3 | LM526A-1103ZR | MOUNT, COVER | 2 | 2 | | |
| A9-4 | LM526--1103Z2 | PIN, LOCKING | 2 | 2 | | |
| A9-5 | K1000000260 | SPRING, COMPRESSION M0.7-8.4-25 | 2 | 2 | | |
| A9-6 | LM2400-2446ZR | ADJUSTER, FOR VARIABLE REEL COVER | 2 | 2 | | |
| A9-7 | K0141060002 | NUT, WING M6-3 | 2 | 2 | | |
| A9-8 | K0144060002 | NUT, W/F-RING M6 | 4 | 4 | | |
| A9-9 | K0213060001 | WASHER, DISK SPRING 1H M6 | 4 | 4 | | |
| A9-10 | LM526A-1104AR | FIN | 4 | 4 | | |
| A9-11 | LS62---2510Z0 | COVER COMP, REEL VARIABLE | 1 | 0 | | |
| A9-12 | LM2400-2445Z0 | COVER COMP, REEL VARIABLE | 0 | 1 | | |
| A9-13 | LM526A-1102ZR | COVER, AUXILIARY | 1 | 1 | | |
| A9-14 | K4510615120 | RIVET, BLIND AVEX 1661-0512 | 2 | 2 | | |
| A9-15 | LS62---2511Z0 | COVER, REEL VARIABLE W/DECAL | 1 | 0 | | |
| A9-16 | LM2400-2421Z0 | COVER, REEL VARIABLE W/DECAL | 0 | 1 | | |
| A9-17 | K4205001600 | DECAL, CAUTION CUTTING HANDS/FEET | 1 | 1 | | |
| A9-18 | K0000060502 | BOLT, M6-50 | 2 | 2 | | |
| A9-19 | K0000060152 | BOLT, M6-15 | 2 | 2 | | |
| A9-20 | K5000060002 | WASHER, M6 | 2 | 2 | | |
| A9-21 | K0000100152 | BOLT, M10-15 | 2 | 2 | | |
| A9-22 | K0200100002 | WASHER, SPRING M10 | 2 | 2 | | |
| A9-23 | LS66---3502Z2 | ROD, OPENING AND SHUTING | 1 | 1 | easy latch | |
| A9-24 | LS66---3503Z2 | BRACKET, OPENING AND SHUTING ROD | 1 | 1 | easy latch | |
| | | | | | | |



LS66_B09_z00

| Cat No. | Code No. | Part name | Qty | | Remark | SN of application |
|---------|-------------|-----------------------------------|------|------|--------|-------------------|
| | | | LS62 | LS66 | | |
| B9-1 | K5206000522 | PLATE, FOR FIXING COVER | 0 | 2 | | |
| B9-2 | K0000060202 | BOLT, M6-20 | 0 | 2 | | |
| B9-3 | K9010000180 | COVER, REEL W/ DECAL | 0 | 1 | | |
| B9-4 | K4205001600 | DECAL, CAUTION CUTTING HANDS/FEET | 0 | 1 | | |
| B9-5 | K0000060102 | BOLT, M6-10 | 0 | 2 | | |
| B9-6 | K0200060002 | WASHER, SPRING M6 | 0 | 8 | | |
| B9-7 | K5000060002 | WASHER, M6 | 0 | 6 | | |
| B9-8 | K0100060002 | NUT, M6 | 0 | 6 | | |
| B9-9 | K527600041R | PLATE, FOR FIXING COVER | 0 | 2 | | |
| B9-10 | K0000060152 | BOLT, M6-15 | 0 | 2 | | |
| | | | | | | |
| | | | | | | |
| | | | | | | |
| | | | | | | |

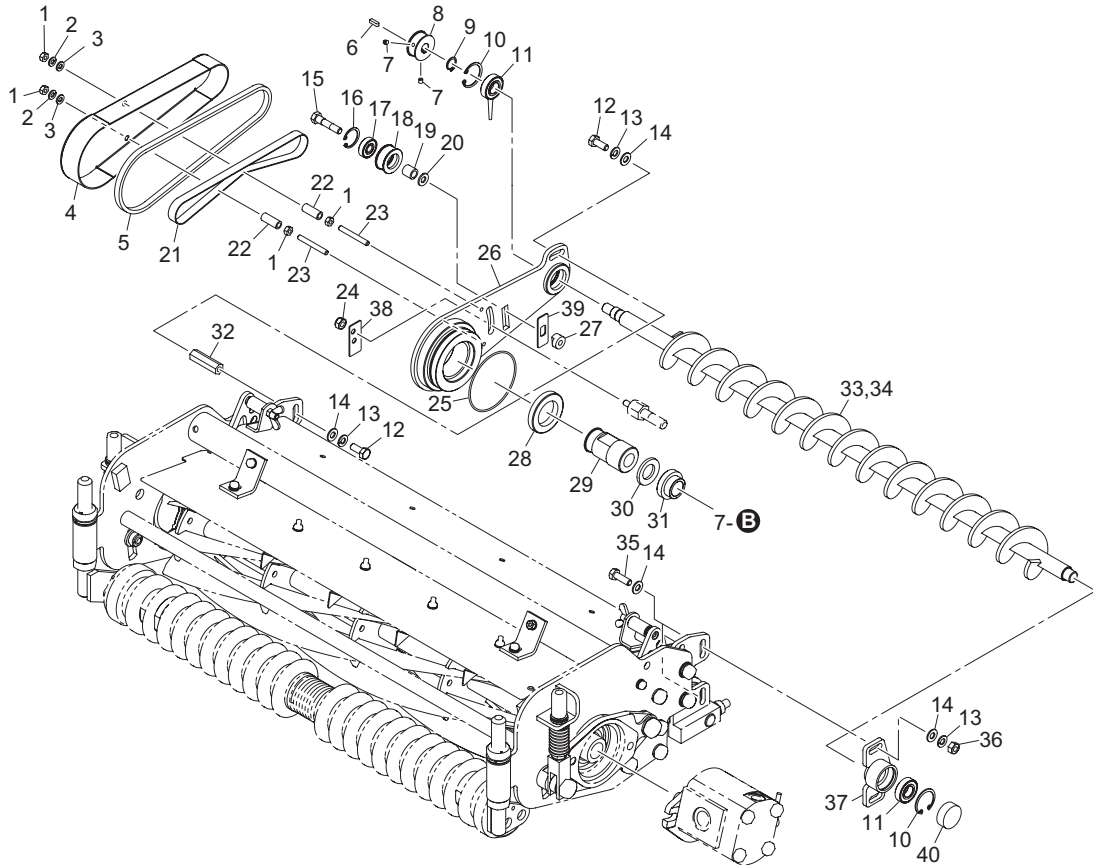


LS66_C09_z00

| Cat No. | Code No. | Part name | Qty | | Remark | SN of application |
|---------|---------------|-----------------------------------|------|------|--------|-------------------|
| | | | LS62 | LS66 | | |
| C9-1 | LM283--1901A0 | COVER, REEL W/DECAL (FRONT) | 0 | 1 | | |
| C9-2 | K4205001600 | DECAL, CAUTION CUTTING HANDS/FEET | 0 | 1 | | |
| C9-3 | K0100060002 | NUT, M6 | 0 | 2 | | |
| C9-4 | K0200060002 | WASHER, SPRING M6 | 0 | 2 | | |
| C9-5 | K5000060002 | WASHER, M6 | 0 | 2 | | |
| C9-6 | LM318--1304AR | FIXTURE, REEL COVER | 0 | 2 | | |
| C9-7 | K0000060152 | BOLT, M6-15 | 0 | 2 | | |
| | | | | | | |
| | | | | | | |
| | | | | | | |
| | | | | | | |
| | | | | | | |
| | | | | | | |

10.CR brush section (motor on left side)

LS62 • LS66

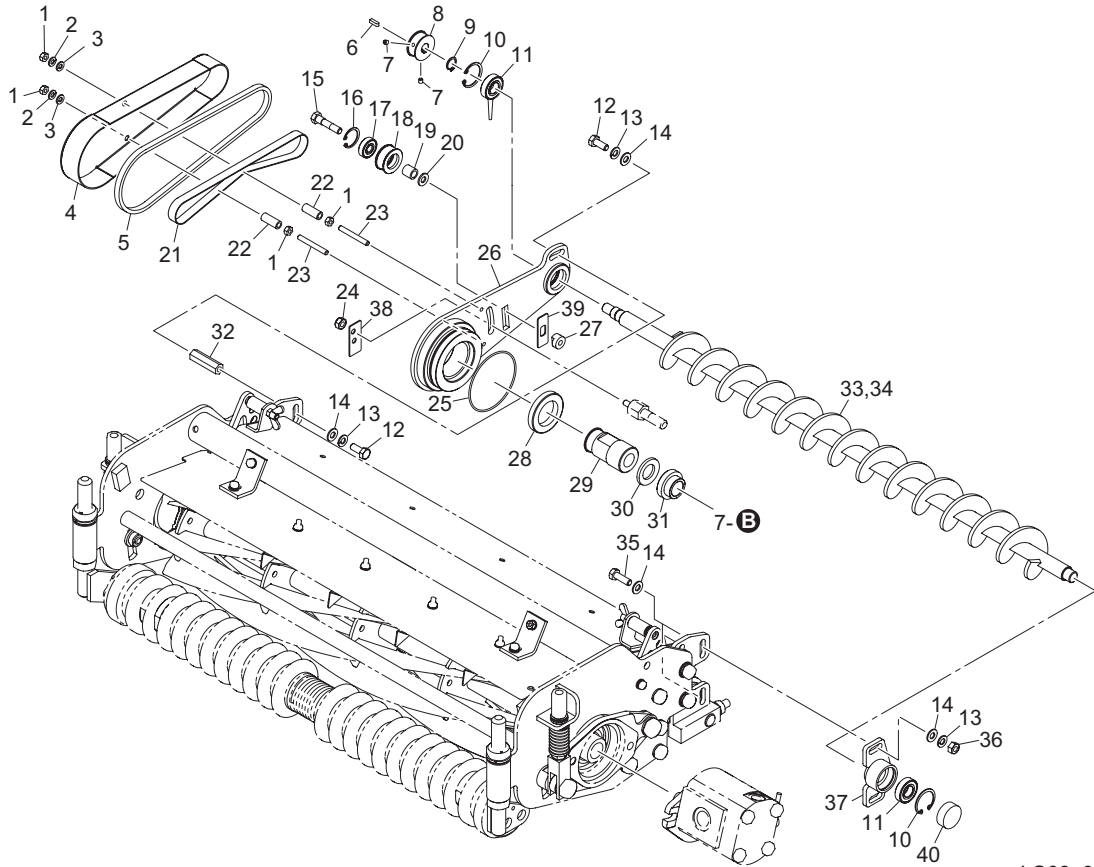


LS66_010_z02

| Cat No. | Code No. | Part name | Qty | | Remark | SN of application |
|---------|---------------|-----------------------------|------|------|--------|-------------------|
| | | | LS62 | LS66 | | |
| 10-1 | K0100060002 | NUT, M6 | 4 | 4 | | |
| 10-2 | K0200060002 | WASHER, SPRING M6 | 2 | 2 | | |
| 10-3 | K5000060002 | WASHER, M6 | 2 | 2 | | |
| 10-4 | LM2400-2405ZD | COVER, BELT | 1 | 1 | | |
| 10-5 | LM2700-4123Z0 | RUBBER, 8U-615 | 1 | 1 | | |
| 10-6 | K0520404140 | KEY, ROUND/SQUARE, M4-414 | 1 | 1 | | |
| 10-7 | K0023050061 | SETSCREW, M5-6 | 2 | 2 | | |
| 10-8 | LM2400-2410A2 | PULLEY, BRUSH SHAFT | 1 | 1 | | |
| 10-9 | K0401015001 | RING, RETAINING S M15 | 1 | 1 | | |
| 10-10 | K0402032001 | RING, RETAINING R M32 | 2 | 2 | | |
| 10-11 | K0612060020 | BEARING, BALL SEAL 2RD 6002 | 2 | 2 | | |
| 10-12 | K0000080202 | BOLT, M8-20 | 2 | 2 | | |
| 10-13 | K0200080002 | WASHER, SPRING M8 | 4 | 4 | | |
| 10-14 | K5000080002 | WASHER, M8 | 6 | 6 | | |
| 10-15 | LM2700-4111Z8 | BOLT, SPECIAL M8 | 1 | 1 | | |
| 10-16 | K0402026001 | RING, RETAINING R M26 | 1 | 1 | | |
| 10-17 | K0608006290 | BEARING, BALL SEAL 2RS 629 | 1 | 1 | | |
| 10-18 | LM2700-4108Z2 | PULLEY, TENSION 1232 | 1 | 1 | | |
| 10-19 | K6211000482 | COLLAR, SGP M9.2-13.8-14 | 1 | 1 | | |
| 10-20 | K0213080002 | WASHER, DISK SPRING 1H M8 | 1 | 1 | | |
| 10-21 | K2380000030 | BELT, F STAR 10FL-500 | 1 | 1 | | |
| 10-22 | K6211000492 | COLLAR, SGP M6.5-10.5-26.4 | 2 | 2 | | |
| 10-23 | K0023060502 | SETSCREW, M6-50 | 2 | 2 | | |
| 10-24 | K0144080002 | NUT, W/F-RING M8 | 1 | 1 | | |
| 10-25 | K0885080000 | O-RING, S80 | 1 | 1 | | |
| 10-26 | LS66R--4202ZD | FRAME, BRUSH (LH) | 1 | 1 | | |
| 10-27 | LM2700-4109Z2 | BASE, SCREW | 1 | 1 | | |
| 10-28 | K0823555080 | OIL SEAL, MHSA355508 | 1 | 1 | | |
| 10-29 | LM2400-2407Z2 | PULLEY, DRIVING 30 | 1 | 1 | | |
| 10-30 | K0212200002 | WASHER, DISK SPRING 1L M20 | 1 | 1 | | |

10.CR brush section (motor on left side)

LS62 • LS66

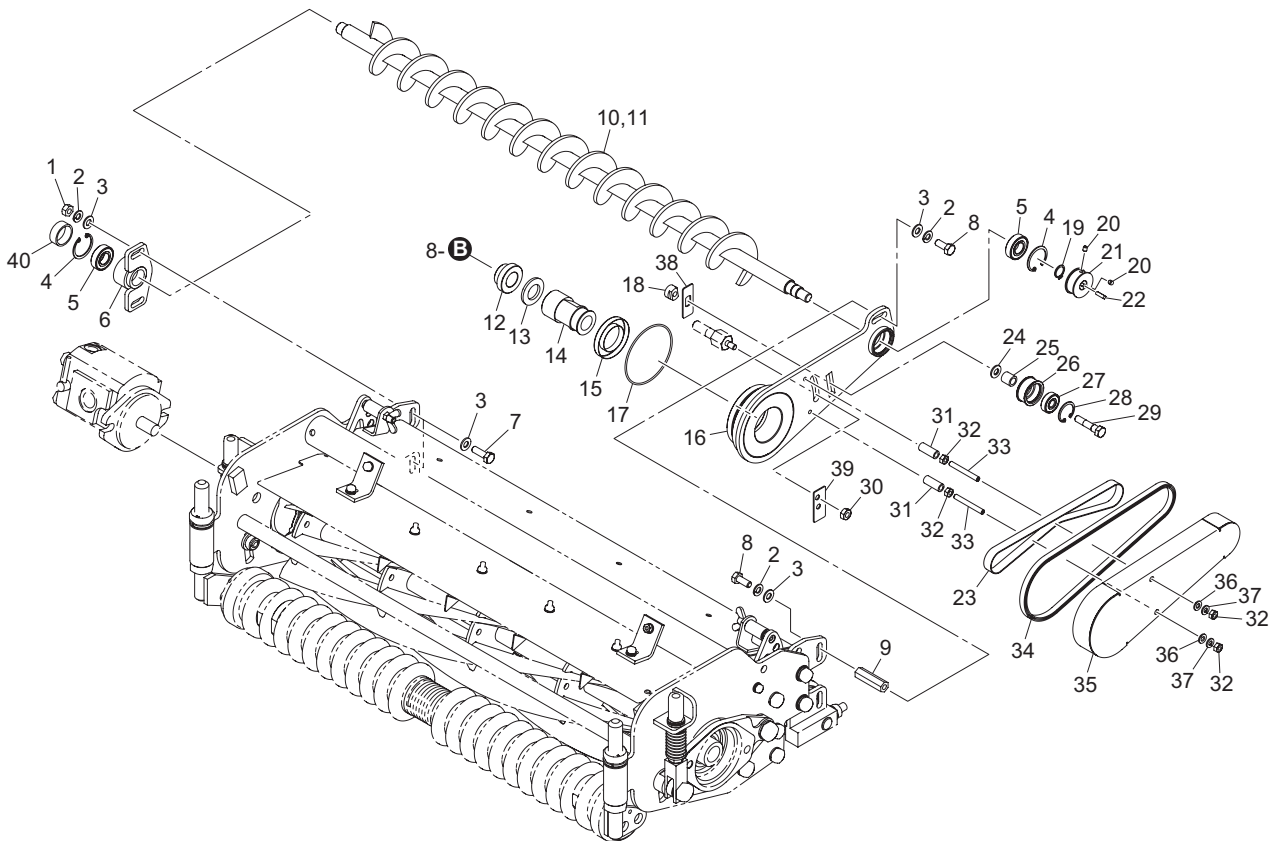


LS66_010_z02

| Cat No. | Code No. | Part name | Qty | | Remark | SN of application |
|---------|---------------|----------------------|------|------|--------|-------------------|
| | | | LS62 | LS66 | | |
| 10-31 | LM2400-2408Z2 | COLLAR, STEPPED | 1 | 1 | | |
| 10-32 | LS66---4203Z2 | NUT, HIGH M8-45.8 | 1 | 1 | | |
| 10-33 | LS62---4212A0 | BRUSH, CR LS22 | 1 | 0 | | |
| 10-34 | LS66---4212A0 | BRUSH, CR LS26 | 0 | 1 | | |
| 10-35 | K0000080252 | BOLT, M8-25 | 2 | 2 | | |
| 10-36 | K0100080002 | NUT, M8 | 2 | 2 | | |
| 10-37 | LS66---4204AD | HOUSING, BRUSH SHAFT | 1 | 1 | | |
| 10-38 | LS66---4205Z2 | PLATE, DUST-PROOF | 1 | 1 | | |
| 10-39 | LH669L-1206Z2 | PLATE | 1 | 1 | | |
| 10-40 | K0890000040 | CAP, RUBBER 32 | 1 | 1 | | |
| | | | | | | |
| | | | | | | |
| | | | | | | |
| | | | | | | |

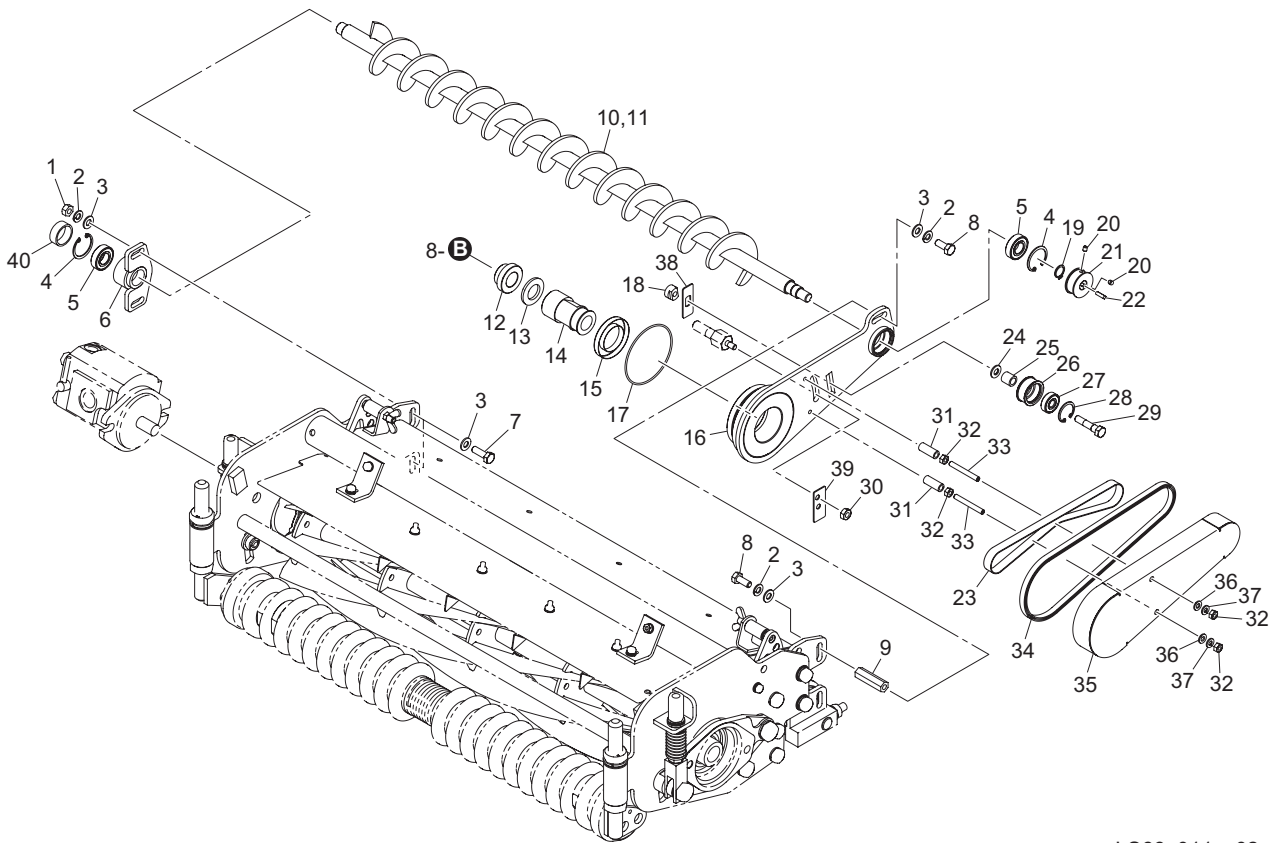
11.CR brush section (motor on right side)

LS62 • LS66



LS66_011_z02

| Cat No. | Code No. | Part name | Qty | | Remark | SN of application |
|---------|---------------|-----------------------------|------|------|--------|-------------------|
| | | | LS62 | LS66 | | |
| 11-1 | K0100080002 | NUT, M8 | 2 | 2 | | |
| 11-2 | K0200080002 | WASHER, SPRING M8 | 4 | 4 | | |
| 11-3 | K5000080002 | WASHER, M8 | 6 | 6 | | |
| 11-4 | K0402032001 | RING, RETAINING R M32 | 2 | 2 | | |
| 11-5 | K0612060020 | BEARING, BALL SEAL 2RD 6002 | 2 | 2 | | |
| 11-6 | LS66---4204AD | HOUSING, BRUSH SHAFT | 1 | 1 | | |
| 11-7 | K0000080252 | BOLT, M8-25 | 2 | 2 | | |
| 11-8 | K0000080202 | BOLT, M8-20 | 2 | 2 | | |
| 11-9 | LS66---4203Z2 | NUT, HIGH M8-45.8 | 1 | 1 | | |
| 11-10 | LS62---4212A0 | BRUSH, CR LS22 | 1 | 0 | | |
| 11-11 | LS66---4212A0 | BRUSH, CR LS26 | 0 | 1 | | |
| 11-12 | LM2400-2408Z2 | COLLAR, STEPPED | 1 | 1 | | |
| 11-13 | K0212200002 | WASHER, DISK SPRING 1L M20 | 1 | 1 | | |
| 11-14 | LM2400-2407Z2 | PULLEY, DRIVING 30 | 1 | 1 | | |
| 11-15 | K0823555080 | OIL SEAL, MHS355508 | 1 | 1 | | |
| 11-16 | LS66L--4201ZD | FRAME, BRUSH (LH) | 1 | 1 | | |
| 11-17 | K0885080000 | O-RING, S80 | 1 | 1 | | |
| 11-18 | LM2700-4109Z2 | BASE, SCREW | 1 | 1 | | |
| 11-19 | K0401015001 | RING, RETAINING S M15 | 1 | 1 | | |
| 11-20 | K0023050061 | SETSCREW, M5-6 | 2 | 2 | | |
| 11-21 | LM2400-2410A2 | PULLEY, BRUSH SHAFT | 1 | 1 | | |
| 11-22 | K0520404140 | KEY, ROUND/SQUARE, M4-414 | 1 | 1 | | |
| 11-23 | K2380000030 | BELT, F STAR 10FL-500 | 1 | 1 | | |
| 11-24 | K0213080002 | WASHER, DISK SPRING 1H M8 | 1 | 1 | | |
| 11-25 | K6211000482 | COLLAR, SGP M9.2-13.8-14 | 1 | 1 | | |
| 11-26 | LM2700-4108Z2 | PULLEY, TENSION 1232 | 1 | 1 | | |
| 11-27 | K0608006290 | BEARING, BALL SEAL 2RS 629 | 1 | 1 | | |
| 11-28 | K0402026001 | RING, RETAINING R M26 | 1 | 1 | | |
| 11-29 | LM2700-4111Z8 | BOLT, SPECIAL M8 | 1 | 1 | | |
| 11-30 | K0144080002 | NUT, W/F-RING M8 | 1 | 1 | | |

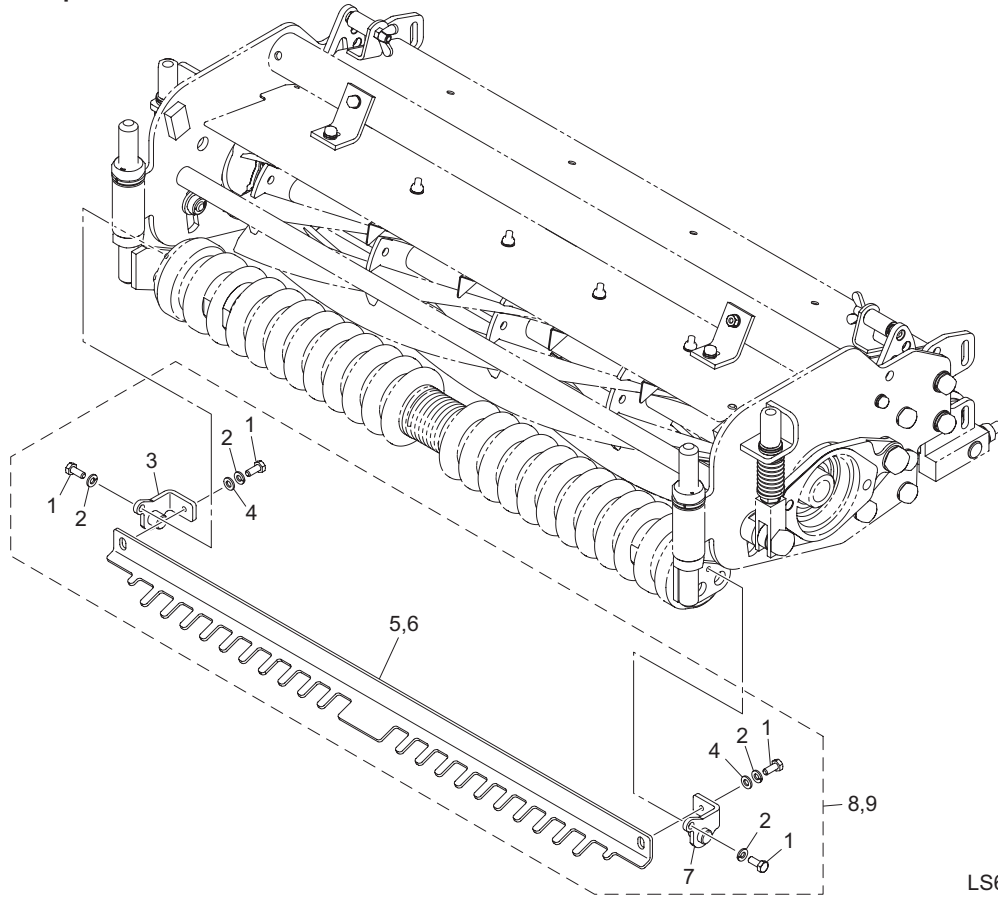


LS66_011_z02

| Cat No. | Code No. | Part name | Qty | | Remark | SN of application |
|---------|---------------|----------------------------|------|------|--------|-------------------|
| | | | LS62 | LS66 | | |
| 11-31 | K6211000492 | COLLAR, SGP M6.5-10.5-26.4 | 2 | 2 | | |
| 11-32 | K0100060002 | NUT, M6 | 4 | 4 | | |
| 11-33 | K0023060502 | SETSCREW, M6-50 | 2 | 2 | | |
| 11-34 | LM2700-4123Z0 | RUBBER, 8U-615 | 1 | 1 | | |
| 11-35 | LM2400-2405ZD | COVER, BELT | 1 | 1 | | |
| 11-36 | K5000060002 | WASHER, M6 | 2 | 2 | | |
| 11-37 | K0200060002 | WASHER, SPRING M6 | 2 | 2 | | |
| 11-38 | LH669L-1206Z2 | PLATE | 1 | 1 | | |
| 11-39 | LS66---4205Z2 | PLATE, DUST-PROOF | 1 | 1 | | |
| 11-40 | K0890000040 | CAP, RUBBER 32 | 1 | 1 | | |
| | | | | | | |
| | | | | | | |
| | | | | | | |
| | | | | | | |

12.Front scraper section

LS62 • LS66

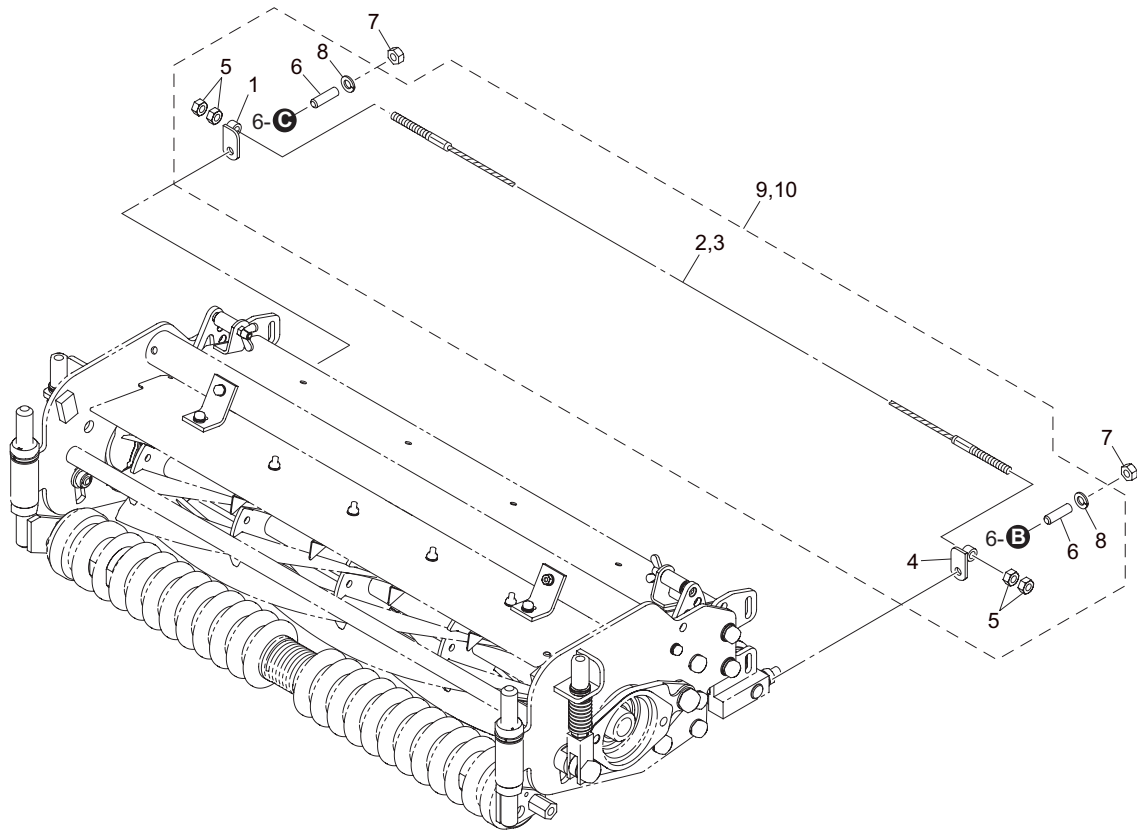


LS66_012_z01

| Cat No. | Code No. | Part name | Qty | | Remark | SN of application |
|---------|---------------|----------------------|------|------|--------|-------------------|
| | | | LS62 | LS66 | | |
| 12-1 | K0000060152 | BOLT, M6-15 | 4 | 4 | | |
| 12-2 | K0200060002 | WASHER, SPRING M6 | 4 | 4 | | |
| 12-3 | LS66---4503A2 | BRACKET, (RH) | 1 | 1 | | |
| 12-4 | K5000060002 | WASHER, M6 | 2 | 2 | | |
| 12-5 | LS62---4501Z2 | SCRAPER, 22 | 1 | 0 | | |
| 12-6 | LS66---4501Z2 | SCRAPER, 26 | 0 | 1 | | |
| 12-7 | LS66---4502A2 | BRACKET, (LH) | 1 | 1 | | |
| 12-8 | LS62---4510Z0 | SCRAPER ASSY | 1 | 0 | | |
| 12-9 | LS66---4510Z0 | SCRAPER ASSY, S UNIT | 0 | 1 | | |
| | | | | | | |
| | | | | | | |
| | | | | | | |
| | | | | | | |
| | | | | | | |

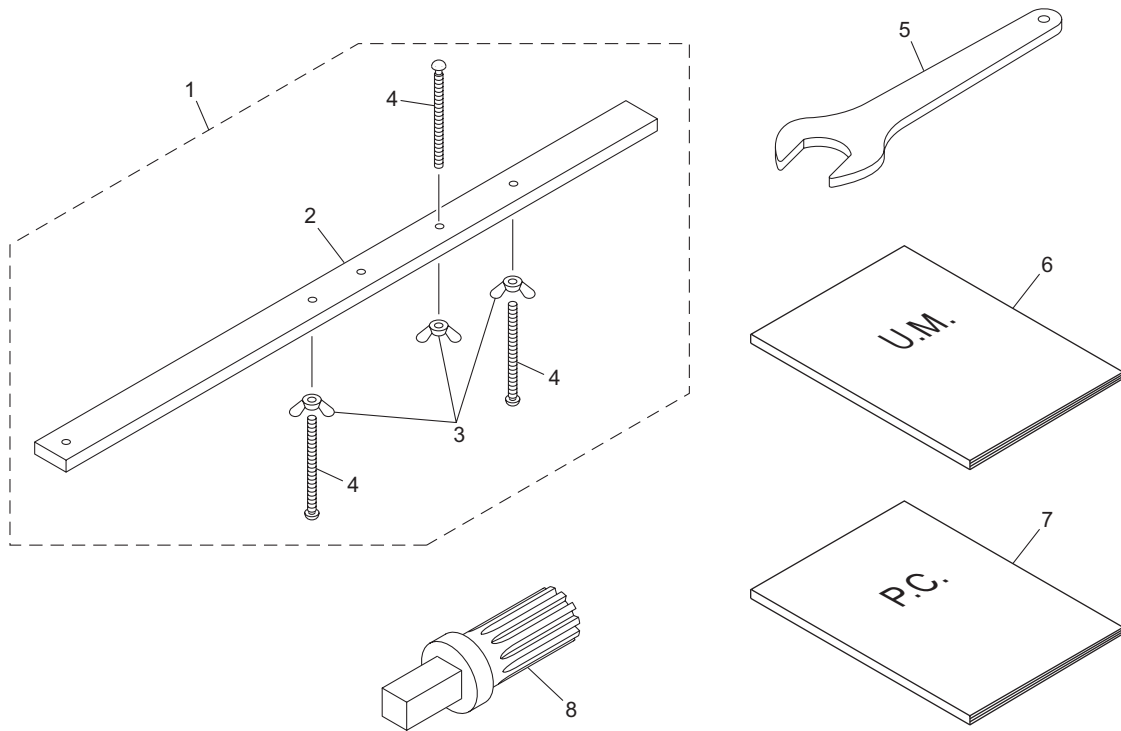
13.Rear scraper section (wire type)

LS62 • LS66



LS66_013_z01

| Cat No. | Code No. | Part name | Qty | | Remark | SN of application |
|---------|----------------|-----------------------------|------|------|--------|-------------------|
| | | | LS62 | LS66 | | |
| 13-1 | K735500068D | BRACKET, A | 1 | 1 | | |
| 13-2 | K1170071000 | CABLE, 710 | 1 | 0 | | |
| 13-3 | K1170081000 | WIRE, 810 | 0 | 1 | | |
| 13-4 | K735500069D | BRACKET, B | 1 | 1 | | |
| 13-5 | K0100080002 | NUT, M8 | 4 | 4 | | |
| 13-6 | K0023100351 | SETSCREW, M10-35 | 2 | 2 | | |
| 13-7 | K0100100002 | NUT, M10 | 2 | 2 | | |
| 13-8 | K0200100002 | WASHER, SPRING M10 | 2 | 2 | | |
| 13-9 | LS62----4710Z0 | SCRAPER ASSY, REAR | 1 | 0 | | |
| 13-10 | LS66----4710Z0 | SCRAPER ASSY, S UNIT (REAR) | 0 | 1 | | |
| | | | | | | |
| | | | | | | |
| | | | | | | |
| | | | | | | |
| | | | | | | |



LS66_014_z02

| Cat No. | Code No. | Part name | Qty | | Remark | SN of application |
|---------|---------------|----------------------------------|------|------|--------|-------------------|
| | | | LS62 | LS66 | | |
| 14-1 | LM2700-1502A0 | GAGE ASSY, CUTTING HEIGHT | 1 | 1 | | |
| 14-2 | LM2700-1501A2 | GAUGE, CUTTING HEIGHT 600A | 1 | 1 | | |
| 14-3 | K0141060002 | NUT, WING M6-3 | 1 | 1 | | |
| 14-4 | K0071000522 | SCREW, FOR ADJ HOC M6-75 | 1 | 1 | | |
| 14-5 | K480200081D | SPANNER, SLIM SINGLE-ENDED 46 | 1 | 1 | | |
| 14a-6 | 750101-120-A | OWNERS OPERATING MANUAL, LS62/66 | 1 | 1 | | |
| 14a-7 | 750101-120-B | PARTS CATALOG, LS62/66 | 1 | 1 | | |
| 14-8 | LS66---7001Z2 | SHAFT, LAPPING | 1 | 1 | option | |
| | | | | | | |
| | | | | | | |
| | | | | | | |
| | | | | | | |
| | | | | | | |

BARONESS[®]
Quality on Demand

 **KYOEISHA CO., LTD.**
Head Office 1-26, Miyuki-cho, Toyokawa-city, Tel :+81-533-84-1390
Aichi-pref, 442-8530 JAPAN Fax :+81-533-84-1220