

BARONESS

Quality on Demand

Technical Information Leaflet

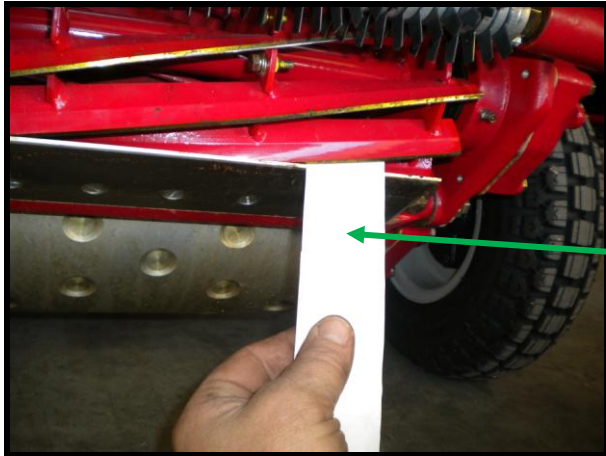
TIL: 014



LM56/66

Blade/Cut Adjustment Procedure

Before commencing any blade adjustments it is very important that the cutting units are thoroughly cleaned and dry.



To check that the blades are cutting correctly use a strip of paper as shown.

With the strip of paper held square to the bottom blade, rotate the cutting cylinder and see if the blades will cut the paper. Check this on both ends of the blades. **Never rotate the cutting cylinder using your hands as the blades are very sharp and can cause serious injury. Use a short length of wooden pole to rotate the cylinder.**

If the paper is not cut you will need to move the bottom blade towards the cutting cylinder.

To do this, rotate the bottom blade adjusting nut anti clockwise as shown.

There are two adjuster nuts, one on each side of the machine. Initially make sure that you adjust both of them by the same amount at the same time in order to keep the bottom blade parallel to the cylinder.

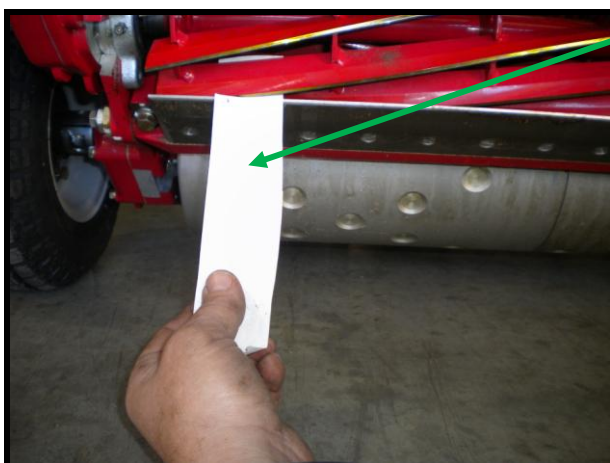
Only ever adjust them by small amounts at any time.

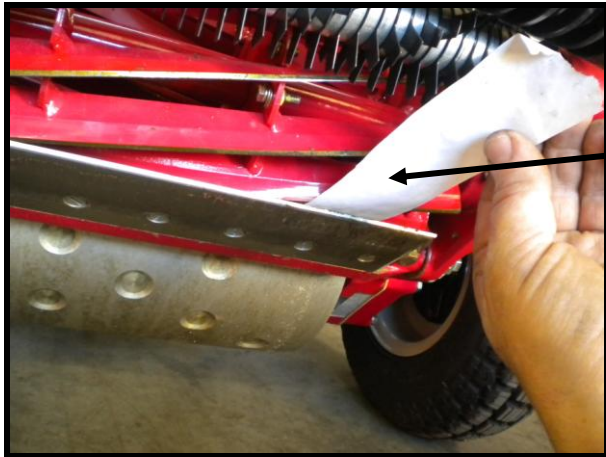


Check the cut again by using a strip of paper as previously explained. **Once again please remember to never put your hand into the cutting cylinder.**

If the paper is still not cut correctly, repeat the above process of adjustment until the paper is cut.

If one side cuts paper but the other side does not, then adjust the side that is not cutting a little bit more until it does cut. Then check the other side again as this could now be too tight. Keep adjusting both sides until the paper is cut across the entire length of the bottom blade.

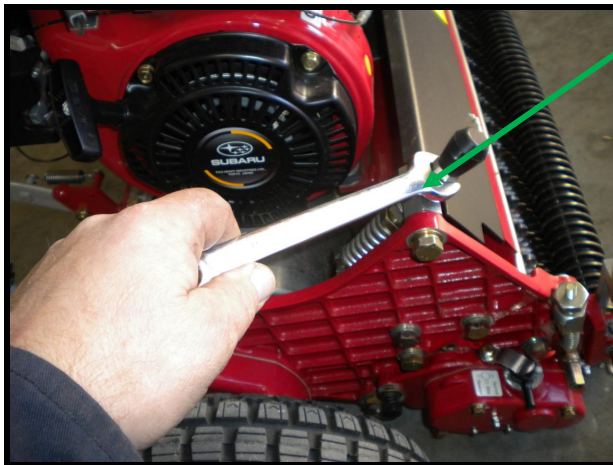




Once the blades are cutting paper on both sides you need to check that you do not have excessive blade contact.

To do this you need to use another strip of paper but this time hold it flat along the surface of the bottom blade as shown.

When you rotate the cutting cylinder the paper should not be cut but should just leave an indentation line. If it does this it is set ok. If it cuts the paper then the contact is too great and the blades will need adjusting to provide a slightly less contact. This is done by turning the blade adjuster nut clockwise by a small amount.



Only adjust the side which is too tight. If both sides are too tight then adjust them both but remember to only use small adjustments and to keep checking both sides.

The blades are correctly adjusted when both sides cut paper when it is held square to the bottom blade but only leaves an indentation in the paper when it is held flat.

Please note that Baroness blades are designed to run non-contact and so do not over tighten them.

If you are unable to achieve an acceptable cut with just a light contact after performing the above adjustments then the blades have become a little blunt and so will need back-lapping.

NOTE: If when you turn the blade adjustment nut the bottom blade does not move and the adjustment nut just comes loose, then there is a good chance that the bottom blade pivot pins have seized, thus not allowing the bottom blade to rotate on these pivot pins. If this happens you will need to refer the machine to your workshop in order to have this area freed off and lubricated.