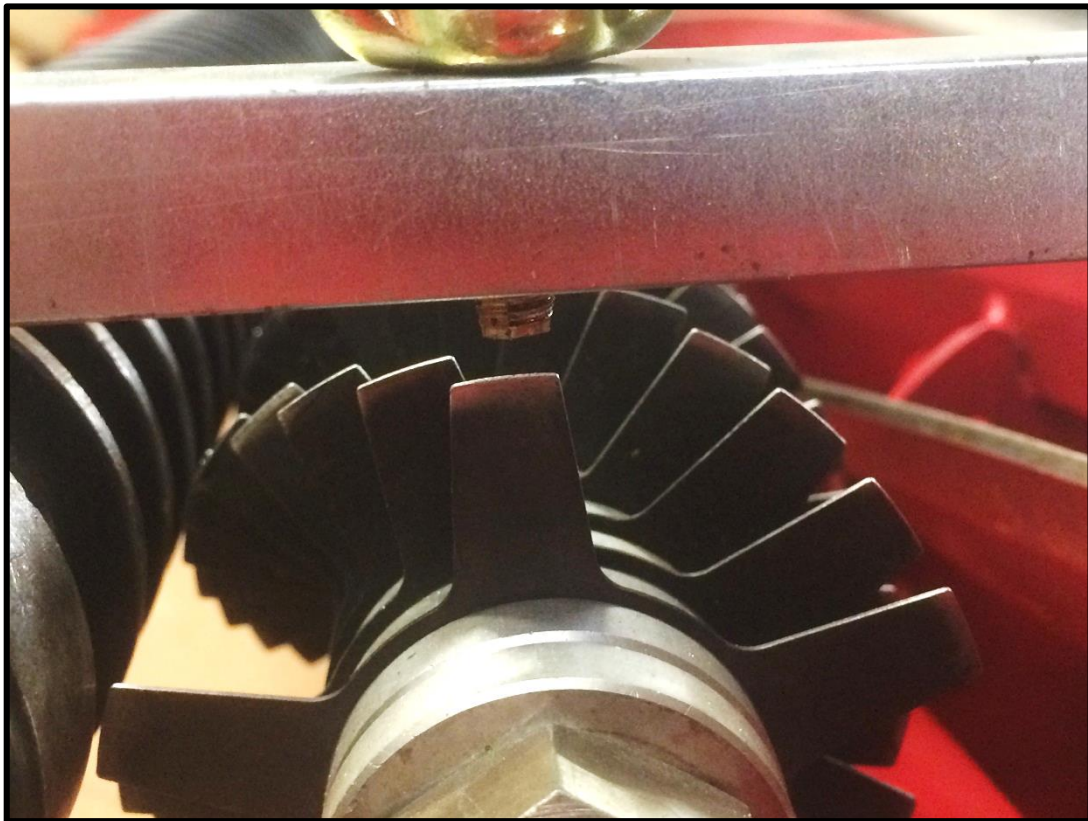


BARRONESS

Quality on Demand

Technical Information Leaflet

TIL: 038



LM315GC

Setting the Groomer Height

BARONESS LM315GC ATTACHMENT ADJUSTMENT

The setting bar for the Baroness LM315GC has two adjusting screws which are used as follows:



Groomer height setting screw. If no groomer is fitted then this screw is not used.

Height of Cut Setting Screw

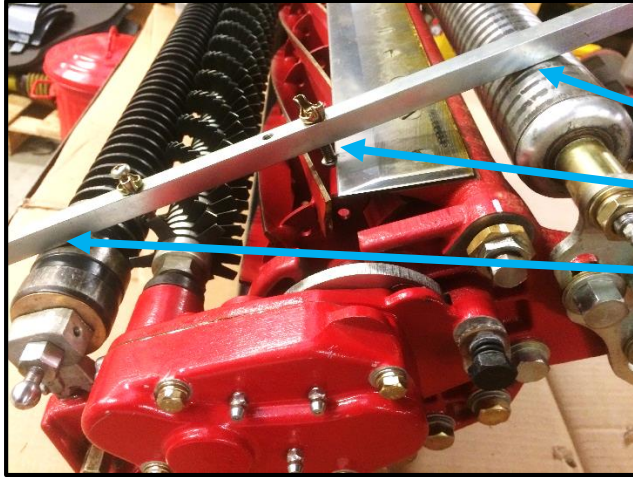
This setting bar needs to be set as follows:



This end of this screw (as shown) needs to be adjusted so that it measures the same distance as the desired groomer setting.

This screw needs to be adjusted so that the distance between the setting bar and the underside of the head of the screw (as shown) is adjusted so that it measures the same distance as the desired height of cut.

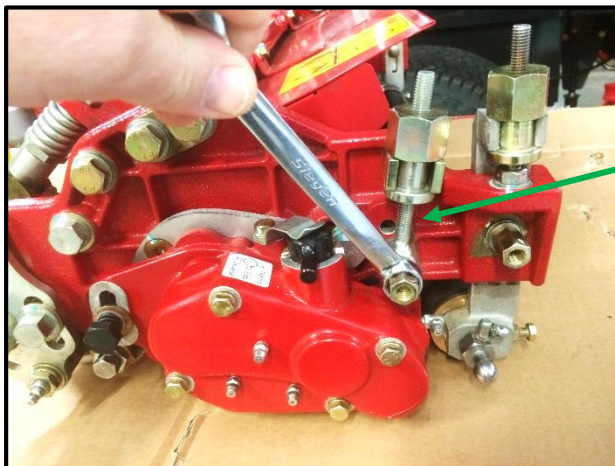
Before you can adjust the groomer you will need to make sure that the height of cut is set correctly.



With the height of cut already set, fit the setting bar to the machine as shown so that the underside of the head of the height of cut adjusting screw is sitting on the upper cutting surface of the bottom blade and that ends of the setting bar are resting up against the rear and front rollers.

With the groomer height already set on the setting bar as previously shown, check the distance between the tips of the groomer blades and the setting bar adjusting screw as shown.

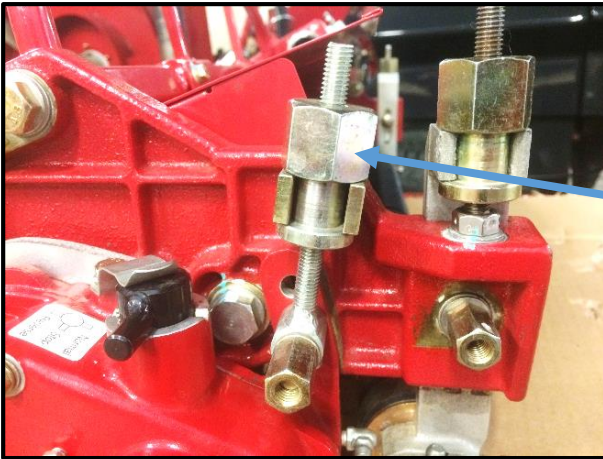
In this photograph the groomer is set too high as there is a gap between the tip of the blade and the setting screw.



To adjust the groomer height you will firstly need to slacken the adjustment locking nuts as shown using a 13mm spanner.

Once they are loose, nip them up finger tight in order to remove excess play but to still allow the adjustment to take place.

Repeat this on both sides of the machine.

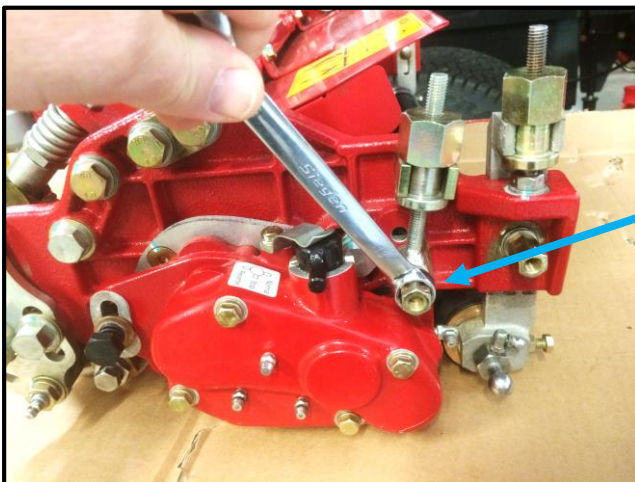
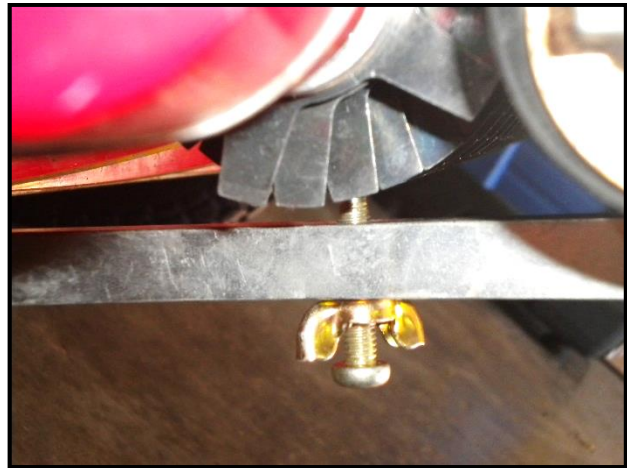


Now adjust the height of the attachment by rotating the Adjuster nut.

Turning the adjuster nut clockwise will raise the attachment and turning it anti-clockwise will lower it.

Adjust the attachment so that the tip of the blade or brush bristle is just touching the end of the pre-set adjuster screw as shown.

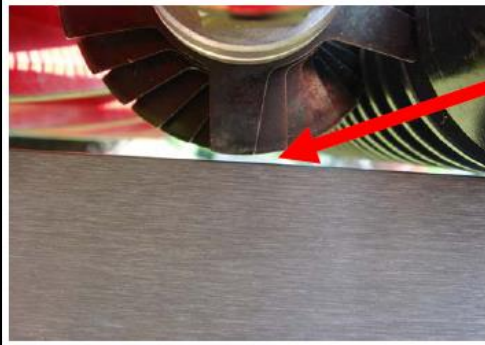
Do this on both sides of the attachment. Repeat this process a couple of times to ensure that both sides are adjusted the same.



Tighten the groomer height locking nuts on both sides of the machine.

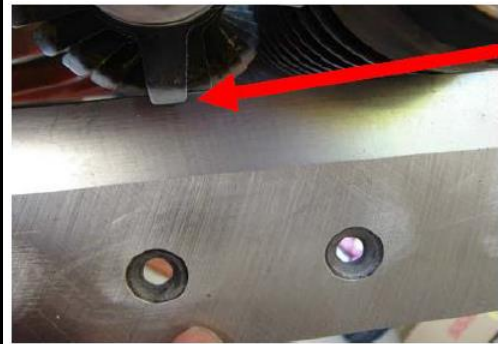
Re-check the groomer height setting and if necessary re-adjust.

NOTE: Adjust all attachments (de-thatcher and brush) in the same way.



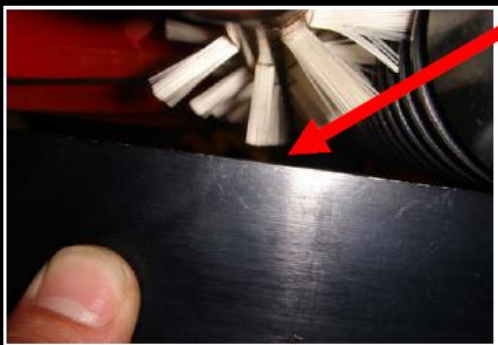
The groomer blades should never come into contact with the soil and are only designed to run between the grass leaf.

When adjusting the groomer blades always ensure that they are at least 1.5mm above the roller line as shown.



De-Thatching Blades are thicker and stronger than groomer blades and are designed to run within the thatch layer.

When adjusting the de-thatching blades it is acceptable for them to run a maximum of 2mm below the roller line as shown.



The rotating brush attachment is only designed to lightly touch the grass. Having it set too aggressively can scorch the grass.

Always adjust the brush bristles so that they are level with the height of cut.